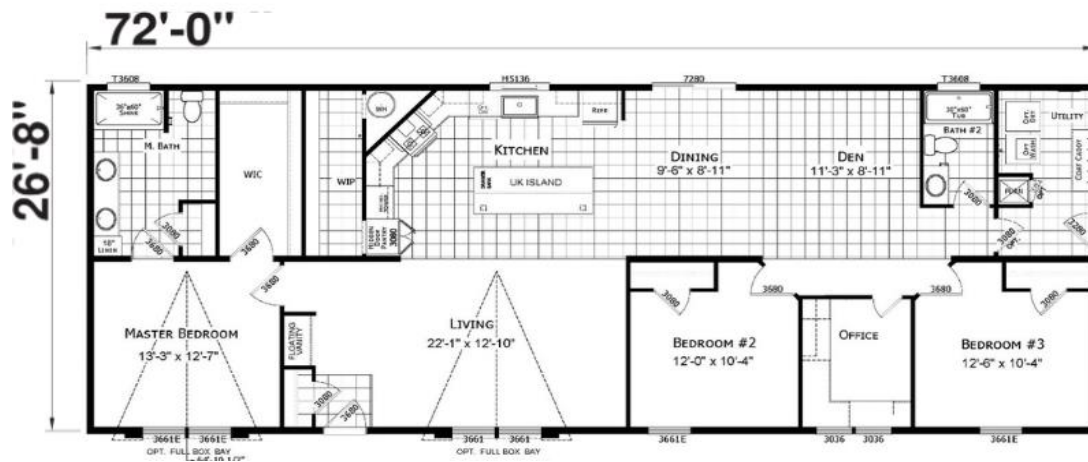




2651 ROUTE 9, MALTA, NY 12020
 P: (518) 580-1305 F: (518) 580-0919

“THE WHITNEY” Atlantic ESD-A-26402



Options Displayed In Home:

- | | | |
|--|---------------------------------------|--------------------------------|
| Upgraded Molding | Corner Computer Desk | (1) Ceiling Fan W/Light Kit |
| Dynasty Etched Glass Front Door | Drawer Over Door Cabinets | Recessed Lights Throughout |
| Cedar Shake Vinyl Siding | 41" Overhang Wood White Cabinets | (2) Cable/ TV Jacks Installed |
| Den/Study With Double Door | Bathroom Transom Windows | Nickel Finish Chandelier |
| Stainless Steel Farm Sink & Range Hood | Porcelain Bathroom Sinks | (3) Black Shade Pendant Lights |
| Build in Microwave | 60" Shower W/ Door & Rain Shower Head | 40-GAL Electric Water Heater |
| Oversized Hidden Pantry | Dining Room & Office Lino | Exterior Water Spigot |
| Large Kitchen Island | Sliding Glass Door | (2) Exterior Nickel Lights |
| Picture Window Over Sink | | Coat Caddy With Seat |
| | | Champion 7-Year Warranty |

* Price Includes: Delivery, Set, Interior & Exterior Trim Out, 2 Sets Of 4x4 Pressure Treated Steps, Regular Skirting, Water, Heat Tape & Insulation On Water Line, Tie Downs, And Sewer Connection To Stub Out. Insulated Skirting At Additional Cost. * Furniture Not Included.

www.SHOHOMES.com