

THE LINDA



1
BEDS

1.5
BATHS

1,112
SQ FT

About the The Linda Design

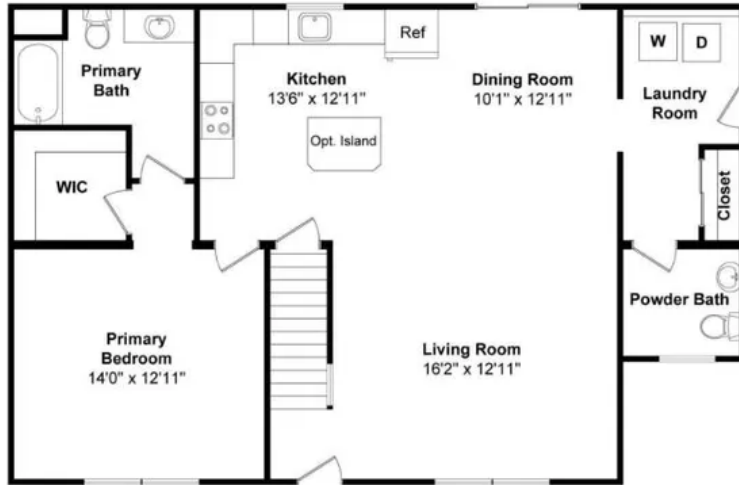
Introducing The Linda floor plan, a charming Cape Cod style home. The first floor features a thoughtfully designed layout with 1 bedroom, 1.5 baths, and 1,112 sq. ft., complete with an open concept, optional island, and a convenient first-floor primary suite. With the potential for expansion on-site, finishing the second level on-site transforms the space into a spacious 3-bedroom, 2.5-bathroom home with a total area of 1,709 sq. ft., providing versatility and comfort for various lifestyle needs. Overall Dimensions: 27'8" x 42'

Bill Lake Modular Homes reserves the right to change prices, plans, elevations, specifications, square footage and availability without prior notice or obligation. Renderings are for representation only and may vary from actual home. All rights reserved Effective 03/09/2024.



billlakehomes.com

FLOOR PLAN THE LINDA



First Floor



Proposed Second Floor

FLOOR PLAN

First Floor Only: 1112 sq. ft., 1 Bed, 1.5 Bath

First Floor + Proposed Second Floor: 1709 sq. ft., 2 Bed, 2.5 Bath

Overall Dimensions: 27'8" x 42'

Plan Shown With Options

Bill Lake Modular Homes reserves the right to change prices, plans, elevations, specifications, square footage and availability without prior notice or obligation. Renderings are for representation only and may vary from actual home. All rights reserved Effective 03/09/2024.



billlakehomes.com

THE RONNI



1
BEDS

1.5
BATHS

1,197
SQ FT

About the The Ronni Design

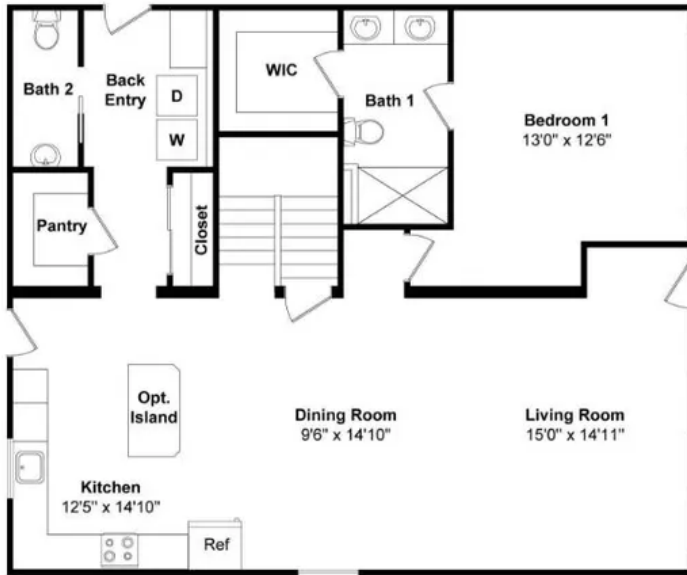
The Ronni floor plan is a charming Cape Cod-style home. The first floor offers a cozy and functional layout with 1 bedroom, 1.5 baths, and 1,197 sq. ft. This plan boasts a convenient first-floor primary suite, an open concept design and optional kitchen island. With the option to finish the second level on-site, the home expands to a spacious 3-bedroom, 2.5-bathroom house spanning 1,957 sq. ft., providing versatility and room to grow. Overall Dimensions: 31'6" x 38'

Bill Lake Modular Homes reserves the right to change prices, plans, elevations, specifications, square footage and availability without prior notice or obligation. Renderings are for representation only and may vary from actual home. All rights reserved Effective 03/09/2024.

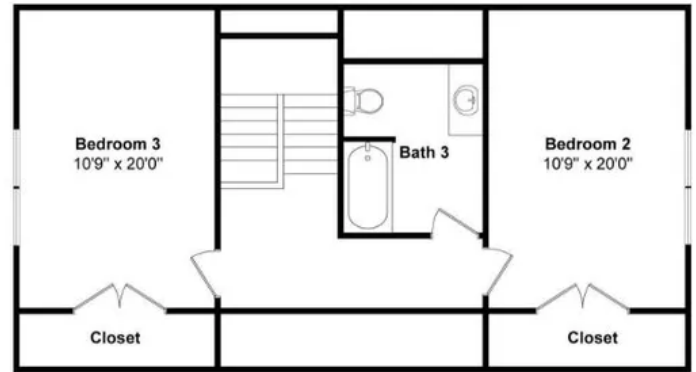


billlakehomes.com

FLOOR PLAN THE RONNI



First Floor



Second Floor

FLOOR PLAN

First Floor Only: 1197 sq. ft., 1 Bed, 1.5 Bath

First Floor + Proposed Second Floor: 1957 sq. ft., 3 Bed, 2.5 Bath

Overall Dimensions: 31'6" x 38'

Plan Shown With Options

Bill Lake Modular Homes reserves the right to change prices, plans, elevations, specifications, square footage and availability without prior notice or obligation. Renderings are for representation only and may vary from actual home. All rights reserved Effective 03/09/2024.



billlakehomes.com

THE MOHAWK



2
BEDS

1
BATHS

1,217
SQ FT

About the The Mohawk Design

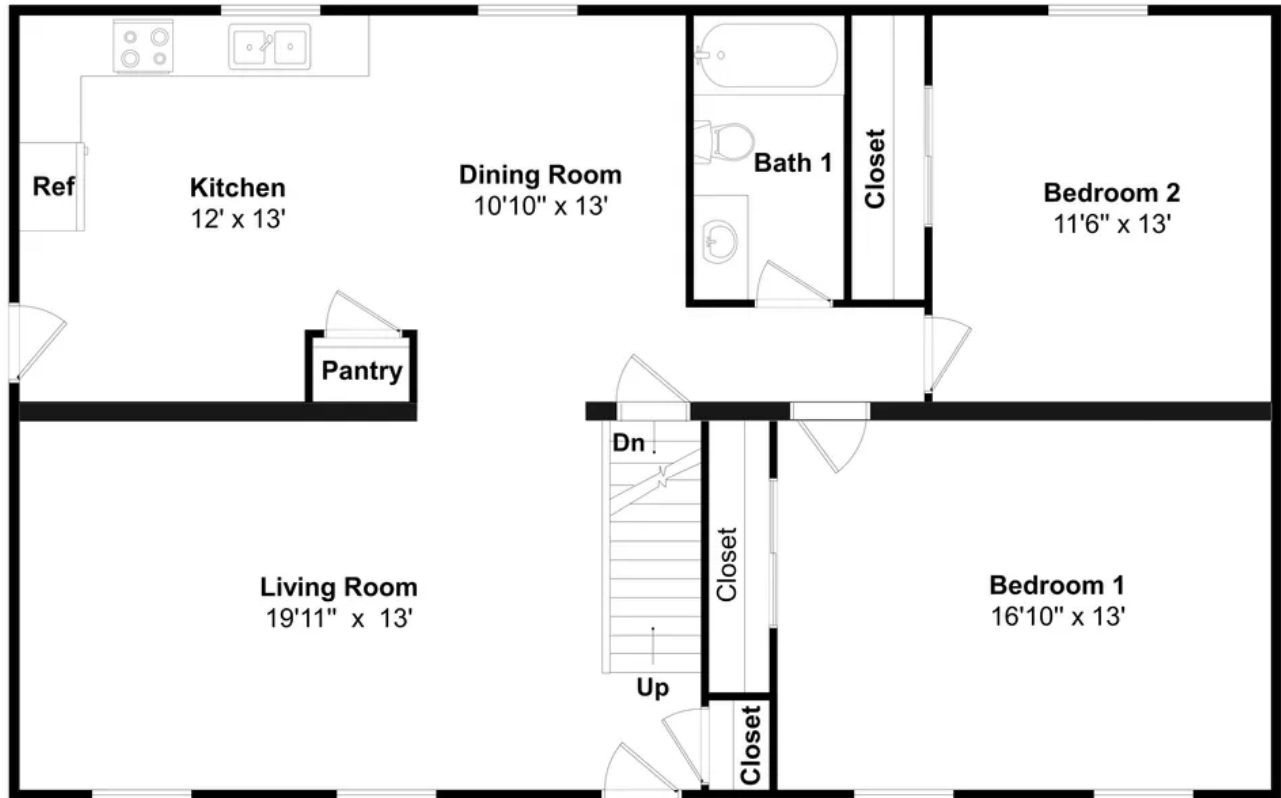
The Mohawk, a Cape Cod style home, offers 1,217 sq. ft. on the main level, featuring two bedrooms and one bathroom. With the potential to finish the second story, there's an opportunity to add extra square footage and customize the space according to your preferences. Overall Dimensions: 27'8"x44

Bill Lake Modular Homes reserves the right to change prices, plans, elevations, specifications, square footage and availability without prior notice or obligation. Renderings are for representation only and may vary from actual home. All rights reserved Effective 03/09/2024.



billlakehomes.com

FLOOR PLAN THE MOHAWK



FLOOR PLAN

1217 sq. ft.

2 Bedrooms, 1 Bathroom

Cape: Finishable Upper Level (not shown)

Plan Shown With Options

Overall Dimensions: 27'8" x 44'

Bill Lake Modular Homes reserves the right to change prices, plans, elevations, specifications, square footage and availability without prior notice or obligation. Renderings are for representation only and may vary from actual home. All rights reserved Effective 03/09/2024.



billlakehomes.com

THE ZACHARY



2
BEDS

2
BATHS

1,217
SQ FT

About the The Zachary Design

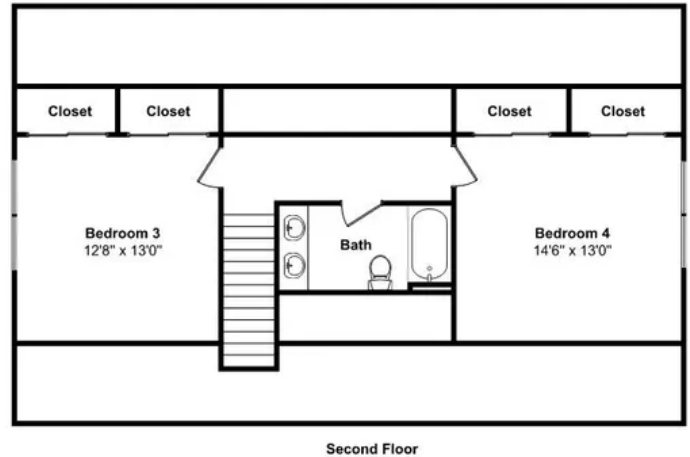
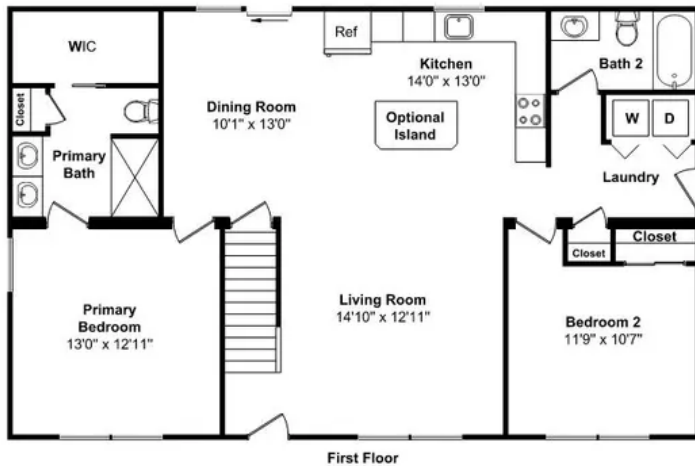
Presenting The Zachary, a classic Cape Cod-style home. The first floor features a thoughtfully designed layout with 2 bedrooms, 2 baths, and 1,217 sq. ft., complemented by a convenient first-floor primary suite, an open concept, and an optional island. With the potential for finishing the second story, this home can become a spacious 4-bedroom, 3-bathroom retreat with a total area of 1,789 sq. ft., providing flexibility and comfort for diverse living preferences. Overall Dimensions: 27'8" x 44'

Bill Lake Modular Homes reserves the right to change prices, plans, elevations, specifications, square footage and availability without prior notice or obligation. Renderings are for representation only and may vary from actual home. All rights reserved Effective 03/09/2024.



billlakehomes.com

FLOOR PLAN THE ZACHARY



FLOOR PLAN
 First Floor Only: 1217 sq. ft., 2 Bed, 2 Bath
 First Floor + Proposed Second Floor: 1789 sq. ft., 4 Bed, 3 Bath
 Overall Dimensions: 27'8" x 44'

Plan Shown With Options

Bill Lake Modular Homes reserves the right to change prices, plans, elevations, specifications, square footage and availability without prior notice or obligation. Renderings are for representation only and may vary from actual home. All rights reserved Effective 03/09/2024.



billlakehomes.com

THE MOLLY



2
BEDS

2
BATHS

1,130
SQ FT

About the The Molly Design

Presenting The Molly floor plan, exuding classic Cape Cod style charm. The first floor boasts 2 bedrooms, 2 baths, and 1,130 sq. ft., complemented by an incorporated garage and welcoming front porch. With potential for expansion on-site, the finishing of the second level can expand the home to 4 bedrooms, 3 bathrooms, and a generous 1,990 sq. ft., offering ample space and flexibility to grow. Overall Dimensions: 34'6"x54'

Bill Lake Modular Homes reserves the right to change prices, plans, elevations, specifications, square footage and availability without prior notice or obligation. Renderings are for representation only and may vary from actual home. All rights reserved Effective 03/09/2024.



billlakehomes.com

FLOOR PLAN THE MOLLY



FLOOR PLAN
First Floor Only: 1130 sq. ft., 2 Bed, 2 Bath
First Floor + Proposed Second Floor: 1990 sq. ft., 4 Bed, 3 Bath
Overall Dimensions: 34'6" x 54'

Bill Lake Modular Homes reserves the right to change prices, plans, elevations, specifications, square footage and availability without prior notice or obligation. Renderings are for representation only and may vary from actual home. All rights reserved Effective 03/09/2024.



billlakehomes.com

THE CHELSEA



2
BEDS

1.5
BATHS

1,302
SQ FT

About the The Chelsea Design

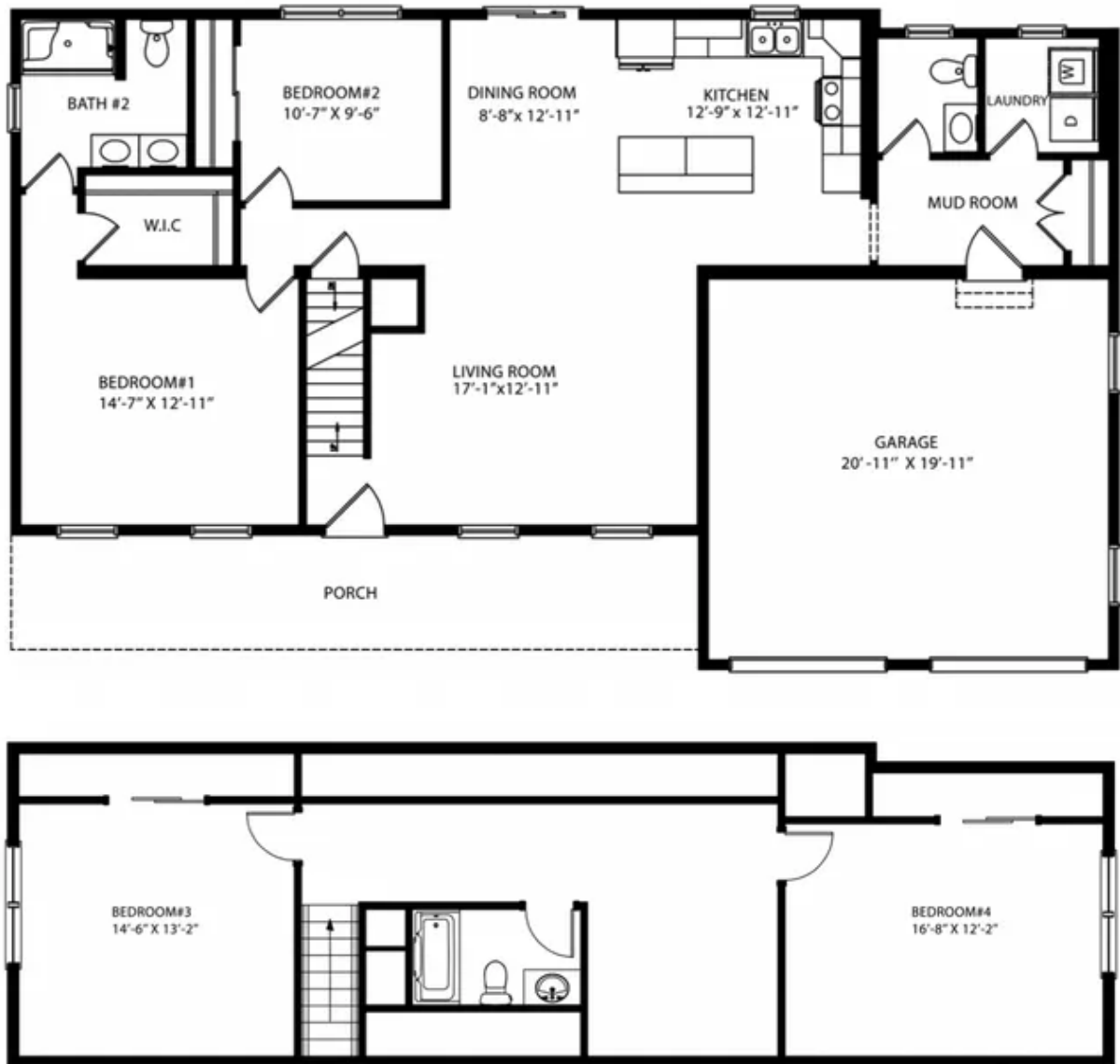
The Chelsea floor plan is a charming Cape Cod style home with an expansive front porch. The first floor encompasses 2 bedrooms, 1.5 baths, and 1,302 sq. ft. Additionally, there's potential to finish the second level on-site, allowing for expansion to a spacious 2,172 sq. ft. with 4 bedrooms and 2.5 baths—offering versatility and room to grow. Overall Dimensions: 34'6"x58'

Bill Lake Modular Homes reserves the right to change prices, plans, elevations, specifications, square footage and availability without prior notice or obligation. Renderings are for representation only and may vary from actual home. All rights reserved Effective 03/09/2024.



billlakehomes.com

FLOOR PLAN THE CHELSEA



FLOOR PLAN

First Floor Only: 1302 sq. ft., 2 Bed, 1.5 Bath

First Floor + Proposed Second Floor: 2172 sq. ft., 4 Bed, 2.5 Bath

Overall Dimensions: 34'6" x 58'

Bill Lake Modular Homes reserves the right to change prices, plans, elevations, specifications, square footage and availability without prior notice or obligation. Renderings are for representation only and may vary from actual home. All rights reserved Effective 03/09/2024.



billlakehomes.com

THE ADALYN



2
BEDS

2
BATHS

1,318
SQ FT

About the The Adalyn Design

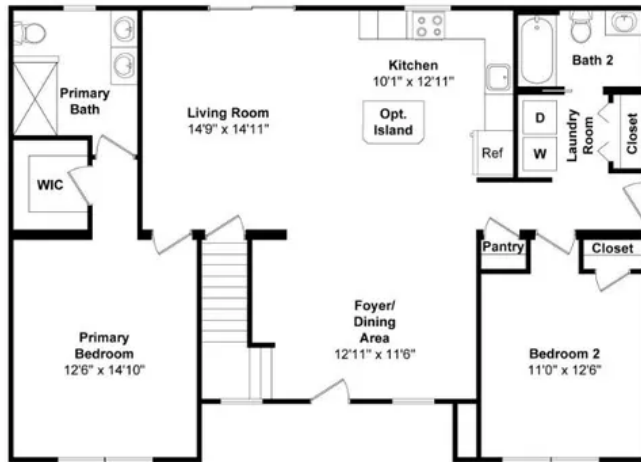
Introducing The Adalyn floor plan, a beautiful Cape Cod style home. The first floor offers a well-designed space with 2 bedrooms, 2 baths, and 1,318 sq. ft., featuring an open concept layout, optional island, and a convenient first-floor primary suite. With the potential to finish the second story on-site, this home can be transformed into a spacious 4-bedroom, 3-bathroom retreat with a total area of 2,103 sq. ft., providing ample room in a stylish and functional setting. Overall Dimensions: 31'6" x 44'

Bill Lake Modular Homes reserves the right to change prices, plans, elevations, specifications, square footage and availability without prior notice or obligation. Renderings are for representation only and may vary from actual home. All rights reserved Effective 03/09/2024.

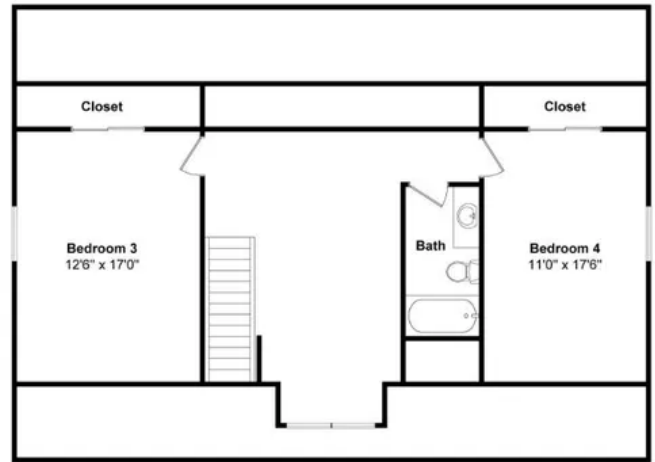


billlakehomes.com

FLOOR PLAN THE ADALYN



First Floor



Proposed Second Floor

FLOOR PLAN

First Floor Only: 1318 sq. ft., 2 Bed, 2 Bath

First Floor + Proposed Second Floor: 2103 sq. ft., 4 Bed, 3 Bath

Overall Dimensions: 31'6" x 44'

Plan Shown With Options

Bill Lake Modular Homes reserves the right to change prices, plans, elevations, specifications, square footage and availability without prior notice or obligation. Renderings are for representation only and may vary from actual home. All rights reserved Effective 03/09/2024.



billlakehomes.com

THE PAYTON



3
BEDS

2
BATHS

1,862
SQ FT

About the The Payton Design

The Payton floor plan spans 1,862 square feet, offering 3 bedrooms and 2 bathrooms on the first floor. With the proposed on-site second floor finishes, totaling 2,242 square feet, it accommodates 4 bedrooms and 3 bathrooms. Notable features include a first-floor private primary suite and soaring ceilings in the Great Room, adding a sense of spaciousness and luxury to the design. Overall Dimensions: 44'x54'

Bill Lake Modular Homes reserves the right to change prices, plans, elevations, specifications, square footage and availability without prior notice or obligation. Renderings are for representation only and may vary from actual home. All rights reserved Effective 03/09/2024.



billlakehomes.com

FLOOR PLAN THE PAYTON



FLOOR PLAN

First Floor Only: 1,862 sq. ft., 3 Bed, 2 Bath

First Floor + Proposed Second Floor: 2,242 sq. ft., 4 Bed, 3 Bath

Overall Dimensions 44' x 54'

Plan Shown With Options

Bill Lake Modular Homes reserves the right to change prices, plans, elevations, specifications, square footage and availability without prior notice or obligation. Renderings are for representation only and may vary from actual home. All rights reserved Effective 03/09/2024.



billlakehomes.com