

THE LUCY



3
BEDS

2.5
BATHS

1,625
SQ FT

About the The Lucy Design

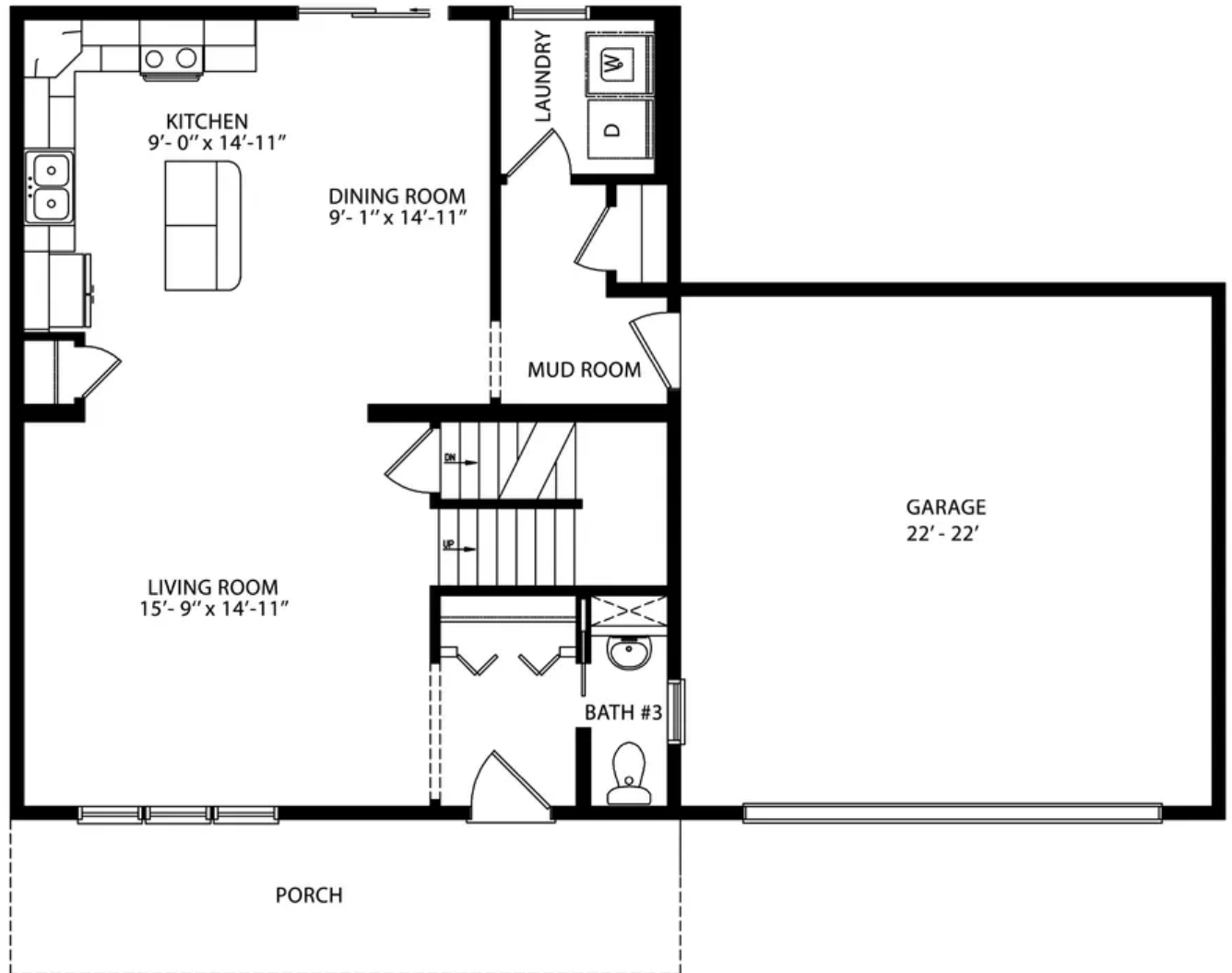
Introducing The Lucy! This three bedroom, two bath, 1,625 sq. ft. Colonial style home boasts a warm welcome from the covered porch to the open concept living space. Look forward to enjoying the spacious kitchen with optional island, second story primary suite with double closets, and a convenient Mud/Laundry Room leading to a potential on-site garage. Overall Dimensions: 31'6"x26'

Bill Lake Modular Homes reserves the right to change prices, plans, elevations, specifications, square footage and availability without prior notice or obligation. Renderings are for representation only and may vary from actual home. All rights reserved Effective 03/09/2024.



billlakehomes.com

FLOOR PLAN THE LUCY



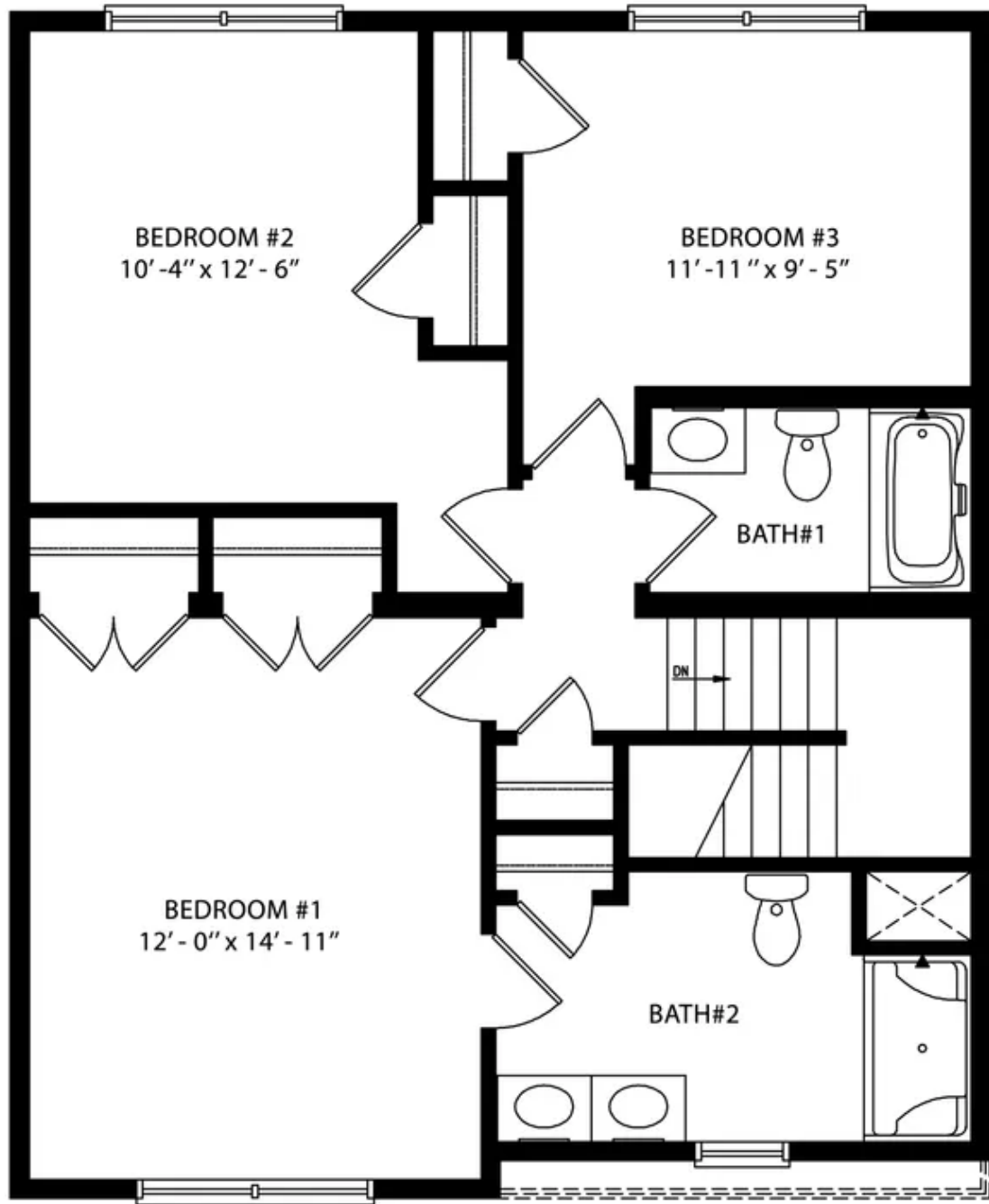
Overall Dimensions: 31'6" x 26'

Bill Lake Modular Homes reserves the right to change prices, plans, elevations, specifications, square footage and availability without prior notice or obligation. Renderings are for representation only and may vary from actual home. All rights reserved Effective 03/09/2024.



billlakehomes.com

FLOOR PLAN THE LUCY



Overall Dimensions: 31'6" x 26'

Bill Lake Modular Homes reserves the right to change prices, plans, elevations, specifications, square footage and availability without prior notice or obligation. Renderings are for representation only and may vary from actual home. All rights reserved Effective 03/09/2024.



billlakehomes.com

THE LILY



3
BEDS

2.5
BATHS

1,890
SQ FT

About the The Lily Design

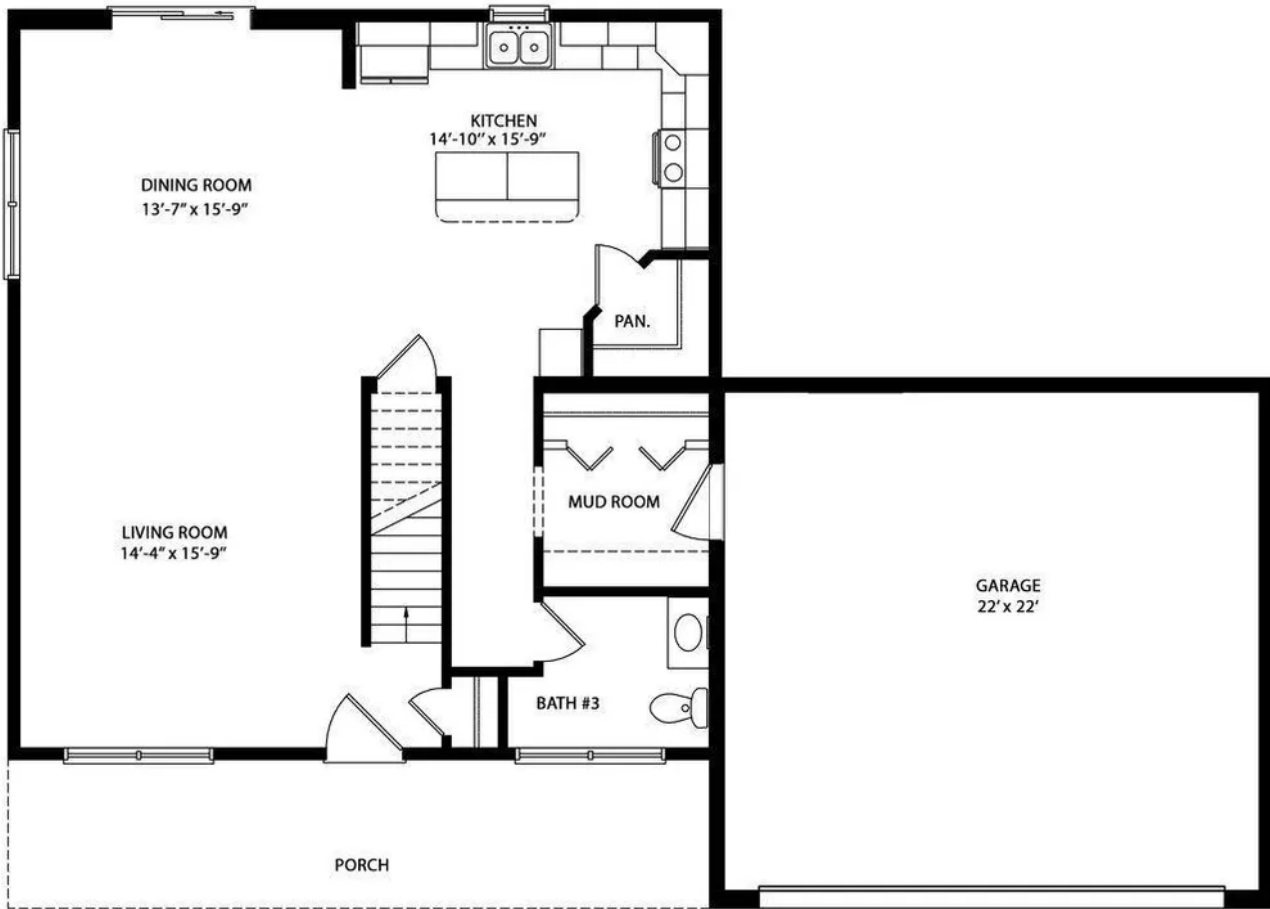
The Lily, a colonial-style home, spans 1,890 sq. ft. and offers a spacious, open first floor design. With 3 bedrooms and 2.5 bathrooms, it features a covered porch for outdoor enjoyment, and a sizable second story primary suite with a great walk-in closet and a convenient second-story laundry. Overall Dimensions: 31'6"x30'

Bill Lake Modular Homes reserves the right to change prices, plans, elevations, specifications, square footage and availability without prior notice or obligation. Renderings are for representation only and may vary from actual home. All rights reserved Effective 03/09/2024.



billlakehomes.com

FLOOR PLAN THE LILY



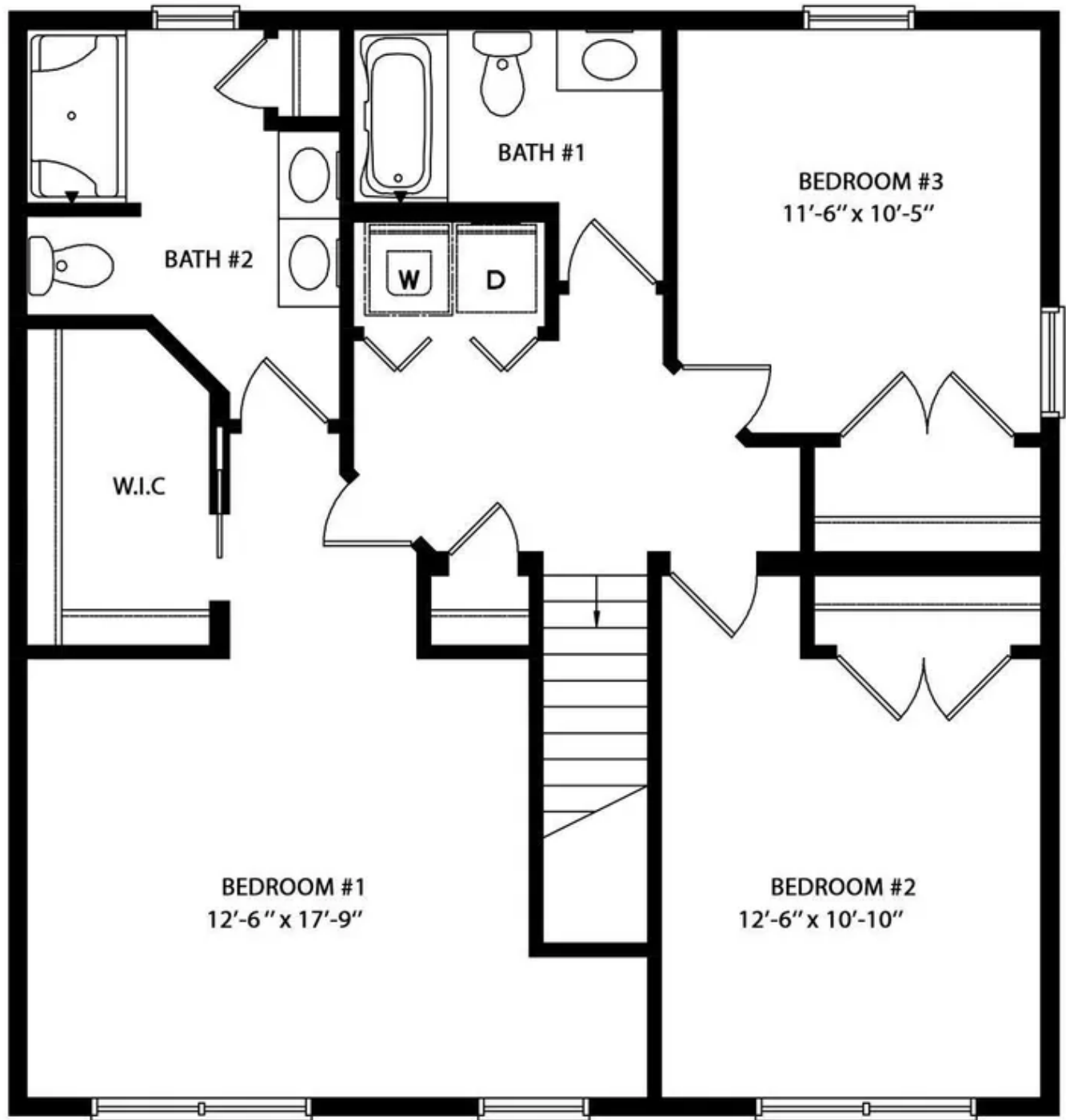
Overall Dimensions: 31'6" x 30'

Bill Lake Modular Homes reserves the right to change prices, plans, elevations, specifications, square footage and availability without prior notice or obligation. Renderings are for representation only and may vary from actual home. All rights reserved Effective 03/09/2024.



billlakehomes.com

FLOOR PLAN THE LILY



Overall Dimensions: 31'6" x 30'

Bill Lake Modular Homes reserves the right to change prices, plans, elevations, specifications, square footage and availability without prior notice or obligation. Renderings are for representation only and may vary from actual home. All rights reserved Effective 03/09/2024.



billlakehomes.com

THE EVELYN



3
BEDS

2.5
BATHS

2,099
SQ FT

About the The Evelyn Design

The Evelyn, encompassing 2,099 sq. ft., boasts 3 bedrooms plus an office and a flex space, ideal for versatile use. With 2.5 bathrooms, an open concept design, a large porch, and an optional island in the kitchen, this plan seamlessly blends functionality with comfort. Overall Dimensions: 32'x42'

Bill Lake Modular Homes reserves the right to change prices, plans, elevations, specifications, square footage and availability without prior notice or obligation. Renderings are for representation only and may vary from actual home. All rights reserved Effective 03/09/2024.



billlakehomes.com

FLOOR PLAN THE EVELYN



Overall Dimensions: 32' x 42'

Bill Lake Modular Homes reserves the right to change prices, plans, elevations, specifications, square footage and availability without prior notice or obligation. Renderings are for representation only and may vary from actual home. All rights reserved Effective 03/09/2024.



billlakehomes.com

FLOOR PLAN THE EVELYN



Overall Dimensions: 32' x 42'

Bill Lake Modular Homes reserves the right to change prices, plans, elevations, specifications, square footage and availability without prior notice or obligation. Renderings are for representation only and may vary from actual home. All rights reserved Effective 03/09/2024.



billlakehomes.com