

# THE EMILY



**2**  
BEDS

**2**  
BATHS

**1,260**  
SQ FT

## About the The Emily Design

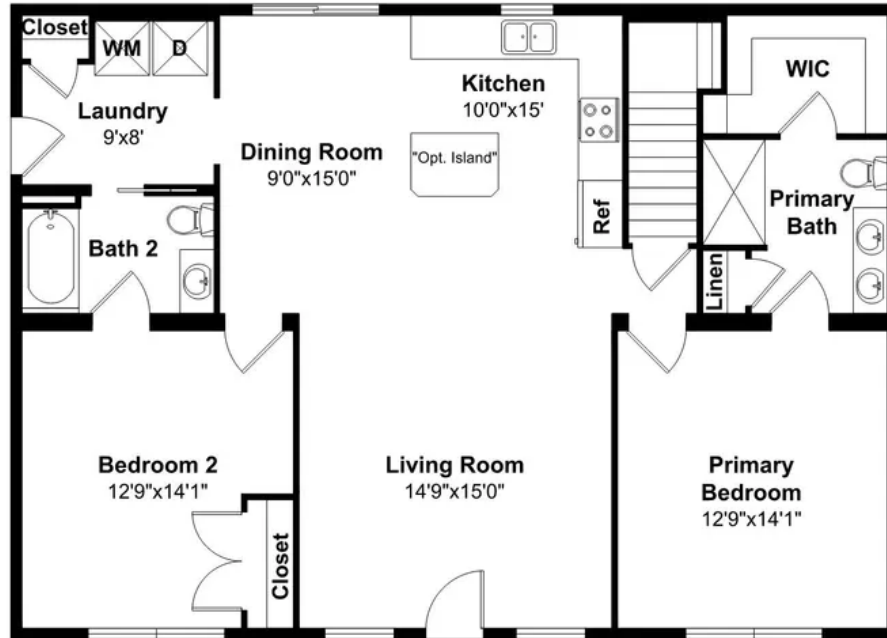
Introducing The Emily! This ranch-style home spans 1,260 sq. ft. and offers a convenient layout with two bedrooms and two bathrooms. The first-floor primary suite adds a touch of luxury, while the open concept design seamlessly integrates the kitchen, featuring an optional island, into the living space for a stylish and functional home. Overall Dimensions: 30' x 42'

Bill Lake Modular Homes reserves the right to change prices, plans, elevations, specifications, square footage and availability without prior notice or obligation. Renderings are for representation only and may vary from actual home. All rights reserved Effective 03/09/2024.



**billlakehomes.com**

# FLOOR PLAN THE EMILY



FLOOR PLAN  
1260 sq.ft.  
2 Bed , 2 Bath  
Overall Dimensions: 30' x 42'

Plan Shown With Options

Bill Lake Modular Homes reserves the right to change prices, plans, elevations, specifications, square footage and availability without prior notice or obligation. Renderings are for representation only and may vary from actual home. All rights reserved Effective 03/09/2024.



[billlakehomes.com](https://billlakehomes.com)

# THE BARBARA



**2**  
BEDS

**2**  
BATHS

**1,440**  
SQ FT

## About the The Barbara Design

The Barbara is a ranch-style home, spanning 1,440 sq. ft. This plan features a practical 2 bed + den, 2 bath layout, perfect for remote work. The open concept design, along with a sizable first-floor primary suite, and a split bedroom arrangement, creates a harmonious living space. Overall Dimensions: 30'x50'

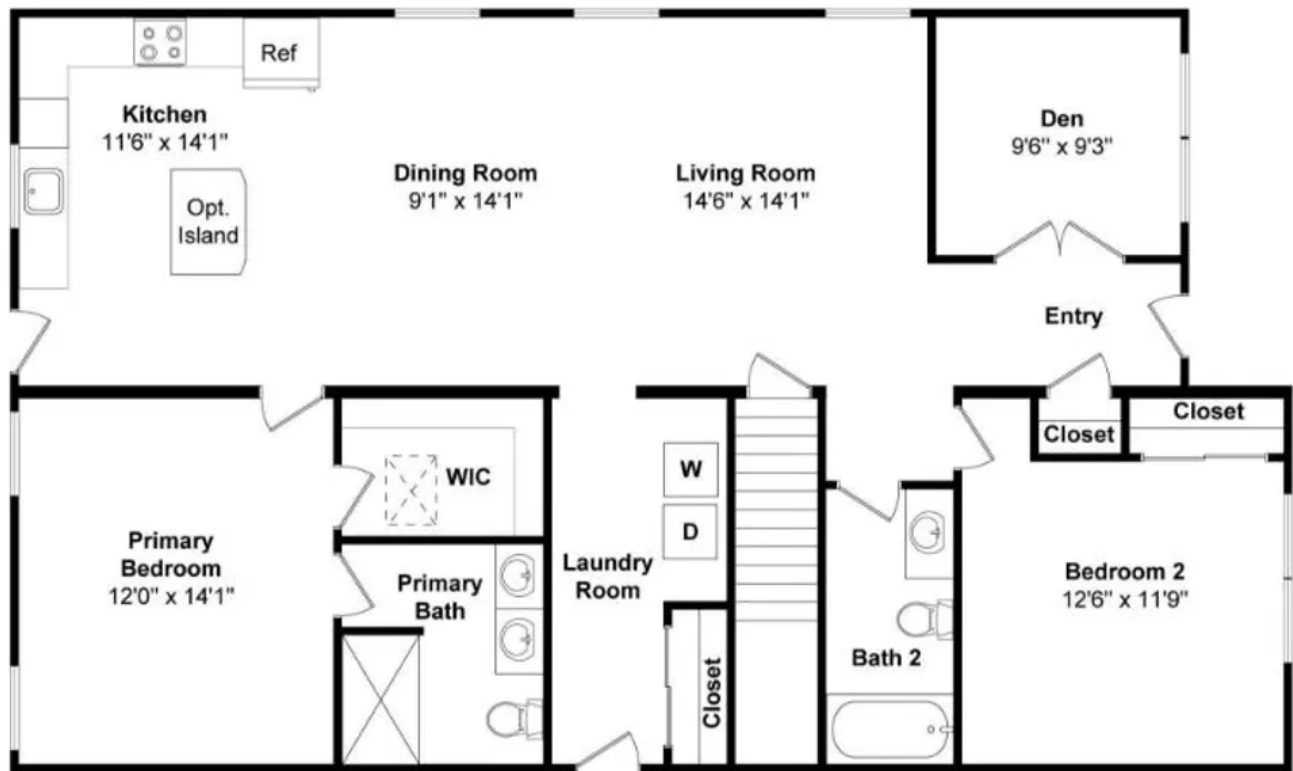
Bill Lake Modular Homes reserves the right to change prices, plans, elevations, specifications, square footage and availability without prior notice or obligation. Renderings are for representation only and may vary from actual home. All rights reserved Effective 03/09/2024.



**billlakehomes.com**



# FLOOR PLAN THE BARBARA



FLOOR PLAN  
1440 sq. ft.  
2 Bedroom + Den, 2 Baths  
Overall Dimensions: 30' x 50'

Plan Shown With Options

Bill Lake Modular Homes reserves the right to change prices, plans, elevations, specifications, square footage and availability without prior notice or obligation. Renderings are for representation only and may vary from actual home. All rights reserved Effective 03/09/2024.



[billlakehomes.com](https://billlakehomes.com)



# THE JULIA



**2**  
BEDS

**2**  
BATHS

**1,685**  
SQ FT

## About the The Julia Design

With 1,685-square-foot, The Julia floor plan presents a thoughtfully designed layout with two bedrooms, an additional study, and two bathrooms. The open floorplan seamlessly integrates the living, dining, and kitchen areas, creating a welcoming and interconnected living space. Highlighted by a desirable first-floor primary suite, this home combines practicality with modern design for a comfortable and functional living experience. Overall Dimensions: 44'x58'

Bill Lake Modular Homes reserves the right to change prices, plans, elevations, specifications, square footage and availability without prior notice or obligation. Renderings are for representation only and may vary from actual home. All rights reserved Effective 03/09/2024.



**billlakehomes.com**

# FLOOR PLAN THE JULIA



Overall Dimensions: 44' x 58'

Bill Lake Modular Homes reserves the right to change prices, plans, elevations, specifications, square footage and availability without prior notice or obligation. Renderings are for representation only and may vary from actual home. All rights reserved Effective 03/09/2024.



[billlakehomes.com](https://billlakehomes.com)

# THE MAPLEWOOD



**3**  
BEDS

**2**  
BATHS

**1,328**  
SQ FT

## About the The Maplewood Design

The Maplewood is a ranch-style home boasting an open-concept design across 1,328 sq. ft., featuring three bedrooms and two bathrooms. The kitchen offers an optional island, enhancing both functionality and style in this inviting living space. Overall Dimensions: 27'8"x48'

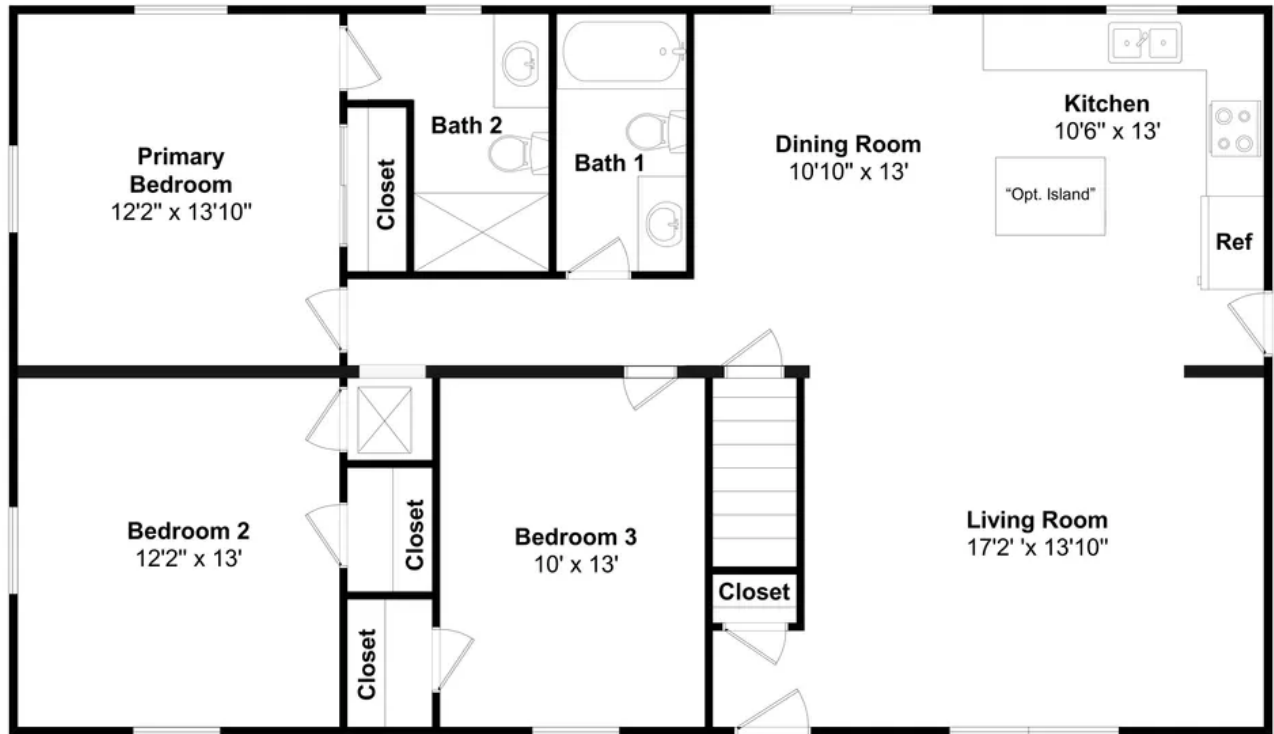
Bill Lake Modular Homes reserves the right to change prices, plans, elevations, specifications, square footage and availability without prior notice or obligation. Renderings are for representation only and may vary from actual home. All rights reserved Effective 03/09/2024.



[billlakehomes.com](https://billlakehomes.com)



# FLOOR PLAN THE MAPLEWOOD



FLOOR PLAN  
1328 sq. ft.  
3 Bedrooms, 2 Baths  
Overall Dimensions: 27'8" x 48'

Plan Shown With Options

Bill Lake Modular Homes reserves the right to change prices, plans, elevations, specifications, square footage and availability without prior notice or obligation. Renderings are for representation only and may vary from actual home. All rights reserved Effective 03/09/2024.



[billlakehomes.com](https://billlakehomes.com)

# THE JUDY



**3**  
BEDS

**2**  
BATHS

**1,328**  
SQ FT

## About the The Judy Design

The Judy is a 1,328 sq. ft. ranch offering three bedrooms and two bathrooms. The open concept design includes a thoughtfully designed kitchen with optional island, a convenient Laundry/Mud Room, and a sizable Primary Suite. Overall Dimensions: 27'8"x48'

Bill Lake Modular Homes reserves the right to change prices, plans, elevations, specifications, square footage and availability without prior notice or obligation. Renderings are for representation only and may vary from actual home. All rights reserved Effective 03/09/2024.



[billlakehomes.com](https://billlakehomes.com)

# FLOOR PLAN THE JUDY



## FLOOR PLAN

1328 sq. ft

3 bed, 2 bath

Overall Dimensions: 27'8" x 48'

Plan Shown With Options

Bill Lake Modular Homes reserves the right to change prices, plans, elevations, specifications, square footage and availability without prior notice or obligation. Renderings are for representation only and may vary from actual home. All rights reserved Effective 03/09/2024.



[billlakehomes.com](https://billlakehomes.com)



# THE AMANDA



**3**  
BEDS

**2**  
BATHS

**1,365**  
SQ FT

## About the The Amanda Design

Encompassing 1,365 sq. ft., The Amanda is a 3 bedroom, 2 bath ranch-style home boasting a welcoming open concept design with cathedral ceilings in the Living Room. A covered porch adds charm, and the sizable first-floor primary suite, complete with a great WIC, enhances comfort and convenience in this thoughtfully planned home. Overall Dimensions: 30'x62'

Bill Lake Modular Homes reserves the right to change prices, plans, elevations, specifications, square footage and availability without prior notice or obligation. Renderings are for representation only and may vary from actual home. All rights reserved Effective 03/09/2024.



[billlakehomes.com](https://billlakehomes.com)

# FLOOR PLAN THE AMANDA



FLOOR PLAN  
1365 sq. ft.  
3 Bedrooms, 2 Baths  
Overall Dimensions: 30' x 62'

Plan Shown With Options

Bill Lake Modular Homes reserves the right to change prices, plans, elevations, specifications, square footage and availability without prior notice or obligation. Renderings are for representation only and may vary from actual home. All rights reserved Effective 03/09/2024.



[billlakehomes.com](https://billlakehomes.com)

# THE WINSTON



**3**  
BEDS

**2**  
BATHS

**1,404**  
SQ FT

## About the The Winston Design

The Winston plan is a ranch-style home spanning 1,404 sq. ft. This plan features three bedrooms and two bathrooms. The open concept design features well-planned space for entertaining, especially with the optional island, a split bedroom layout that provides privacy, and a convenient laundry/mud room. Overall Dimensions: 27'8"x48

Bill Lake Modular Homes reserves the right to change prices, plans, elevations, specifications, square footage and availability without prior notice or obligation. Renderings are for representation only and may vary from actual home. All rights reserved Effective 03/09/2024.



[billlakehomes.com](https://billlakehomes.com)



# FLOOR PLAN THE WINSTON



## FLOOR PLAN

1,404 sq. ft.  
3 Bed, 2 Bath  
Overall Dimensions: 27'8" x 48'

Plan Shown with Options

Bill Lake Modular Homes reserves the right to change prices, plans, elevations, specifications, square footage and availability without prior notice or obligation. Renderings are for representation only and may vary from actual home. All rights reserved Effective 03/09/2024.



[billlakehomes.com](https://billlakehomes.com)

# THE ROSEMARIE



**3**  
BEDS

**2**  
BATHS

**1,438**  
SQ FT

## About the The Rosemarie Design

Introducing The Rosemarie! Encompassing 1,438 sq. ft., this ranch-style home presents three bedrooms and two bathrooms. The split bedroom design enhances privacy, and the kitchen with an optional island, along with a great mud/laundry room, adds both style and convenience to this thoughtfully designed living space. Overall Dimensions: 27'8"x52'

Bill Lake Modular Homes reserves the right to change prices, plans, elevations, specifications, square footage and availability without prior notice or obligation. Renderings are for representation only and may vary from actual home. All rights reserved Effective 03/09/2024.



[billlakehomes.com](https://billlakehomes.com)

# FLOOR PLAN THE ROSEMARIE



FLOOR PLAN  
1438 sq. ft.  
3 Bedrooms, 2 Baths  
Overall Dimensions 27'8" x 52'

Plan Shown With Options

Bill Lake Modular Homes reserves the right to change prices, plans, elevations, specifications, square footage and availability without prior notice or obligation. Renderings are for representation only and may vary from actual home. All rights reserved Effective 03/09/2024.



[billlakehomes.com](https://billlakehomes.com)



# THE JESSI



**3**  
BEDS

**2**  
BATHS

**1,438**  
SQ FT

## About the The Jessi Design

The Jessi is a ranch-style home including 1,438 sq. ft., three bedrooms and two bathrooms. It features a desirable first-floor primary suite with a split bedroom design for privacy. The open concept design seamlessly incorporates a kitchen with a pantry and optional island, and the inclusion of a first floor mud/laundry room adds practicality and convenience to this living space. Overall Dimensions: 27'8"x52'

Bill Lake Modular Homes reserves the right to change prices, plans, elevations, specifications, square footage and availability without prior notice or obligation. Renderings are for representation only and may vary from actual home. All rights reserved Effective 03/09/2024.



[billlakehomes.com](https://billlakehomes.com)

# FLOOR PLAN THE JESSI



**FLOOR PLAN**  
1438 sq.ft.  
3 Bed, 2 Bath  
Overall Dimensions: 27'8" x 52'

Plan Shown with Options

Bill Lake Modular Homes reserves the right to change prices, plans, elevations, specifications, square footage and availability without prior notice or obligation. Renderings are for representation only and may vary from actual home. All rights reserved Effective 03/09/2024.



[billlakehomes.com](https://billlakehomes.com)

# THE MACK



**3**  
BEDS

**2**  
BATHS

**1,502**  
SQ FT

## About the The Mack Design

The Mack is a 1,502 sq. ft. ranch-style home that offers an open concept design with a sizable first-floor primary suite within the total three bedrooms, two bathrooms. The split bedroom design enhances privacy, and the kitchen with an optional island adds versatility to this thoughtfully planned living space. Overall Dimensions: 31'6"x 50'

Bill Lake Modular Homes reserves the right to change prices, plans, elevations, specifications, square footage and availability without prior notice or obligation. Renderings are for representation only and may vary from actual home. All rights reserved Effective 03/09/2024.



[billlakehomes.com](https://billlakehomes.com)



# FLOOR PLAN THE MACK



FLOOR PLAN  
1502 sq. ft.  
3 Bedrooms, 2 Baths  
Overall Dimensions: 31'6" x 50'

Plan Shown With Options

Bill Lake Modular Homes reserves the right to change prices, plans, elevations, specifications, square footage and availability without prior notice or obligation. Renderings are for representation only and may vary from actual home. All rights reserved Effective 03/09/2024.



[billlakehomes.com](https://billlakehomes.com)

# THE KYLIE



**3**  
BEDS

**2**  
BATHS

**1,606**  
SQ FT

## About the The Kylie Design

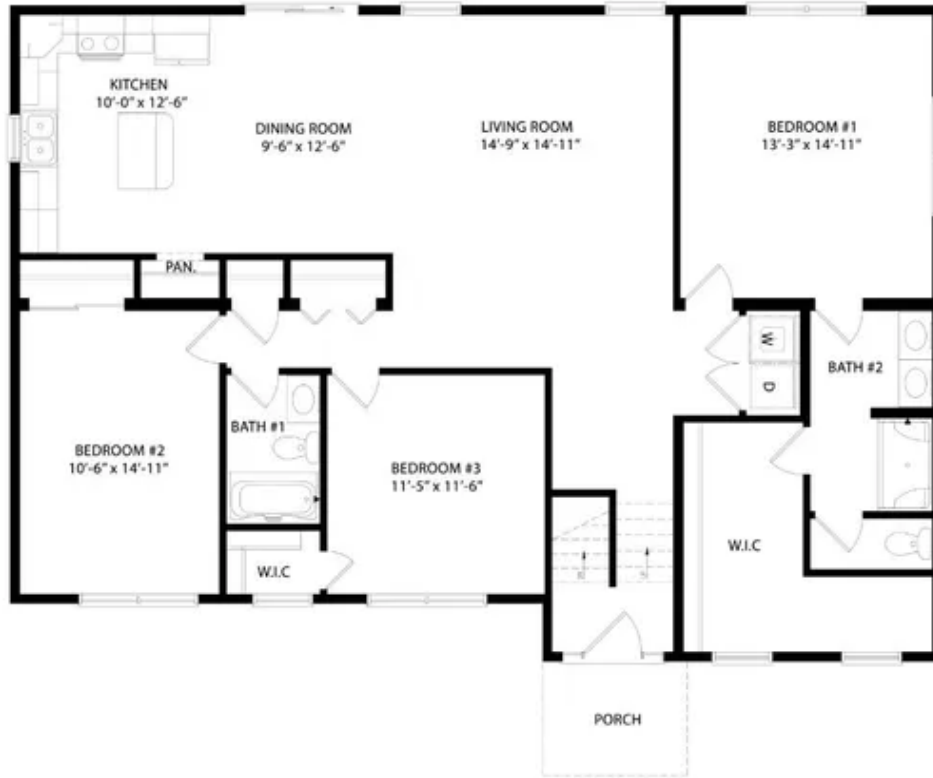
Introducing The Kylie floor plan, a stylish Raised Ranch-style home. The main floor offers a spacious layout featuring 3 bedrooms, 2 baths, and 1,606 sq. ft., enhanced by an open concept design, optional island, and a great primary suite. With the option to finish the on-site lower level, there's potential to add even more space and customization to suit various lifestyle needs. Overall Dimensions: 34'6"x49'

Bill Lake Modular Homes reserves the right to change prices, plans, elevations, specifications, square footage and availability without prior notice or obligation. Renderings are for representation only and may vary from actual home. All rights reserved Effective 03/09/2024.



**billlakehomes.com**

# FLOOR PLAN THE KYLIE



Overall Dimensions: 34'6" x 49'

Bill Lake Modular Homes reserves the right to change prices, plans, elevations, specifications, square footage and availability without prior notice or obligation. Renderings are for representation only and may vary from actual home. All rights reserved Effective 03/09/2024.



[billlakehomes.com](https://billlakehomes.com)



# THE ROMA



**3**  
BEDS

**2**  
BATHS

**1,679**  
SQ FT

## About the The Roma Design

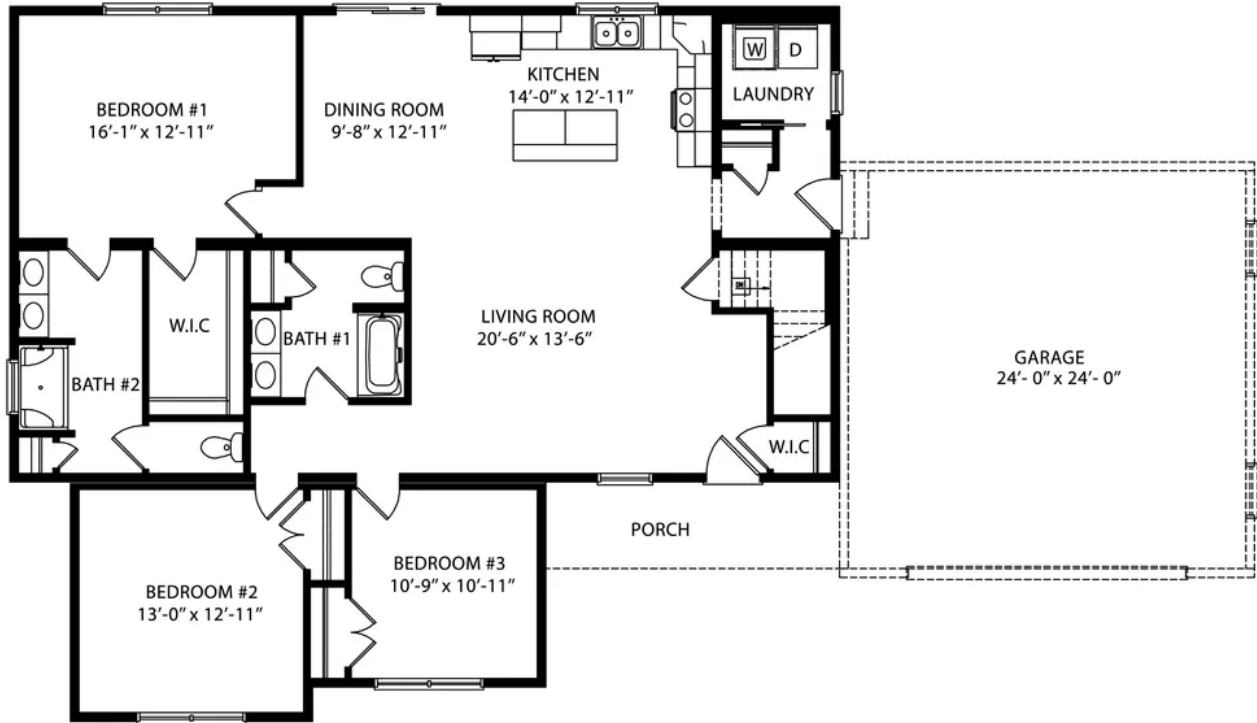
Introducing The Roma, a stylish and versatile floor plan spanning 1,679 sq. ft. Designed with functionality in mind, this layout offers 3 bedrooms and 2 bathrooms, with the added convenience of a desirable first-floor primary suite. The open floorplan seamlessly connects the living, dining, and kitchen areas, providing ample space for both relaxation and entertaining. Plus, the optional island in the kitchen adds versatility to this inviting home design. Overall Dimensions: 41'6"x48'

Bill Lake Modular Homes reserves the right to change prices, plans, elevations, specifications, square footage and availability without prior notice or obligation. Renderings are for representation only and may vary from actual home. All rights reserved Effective 03/09/2024.



[billlakehomes.com](https://billlakehomes.com)

# FLOOR PLAN THE ROMA



Overall Dimensions: 41'6" x 48'

Bill Lake Modular Homes reserves the right to change prices, plans, elevations, specifications, square footage and availability without prior notice or obligation. Renderings are for representation only and may vary from actual home. All rights reserved Effective 03/09/2024.



[billlakehomes.com](https://billlakehomes.com)

# THE MADISON



**3**  
BEDS

**2**  
BATHS

**1,736**  
SQ FT

## About the The Madison Design

The Madison floorplan spans 1,736 sq. ft., featuring 3 bedrooms and 2 bathrooms. With an open concept design, the layout includes a spacious living area, a large porch for outdoor enjoyment, and an optional island in the kitchen. The primary suite is a standout feature, providing a great retreat within this well-designed home. Overall Dimensions: 43'6"x64

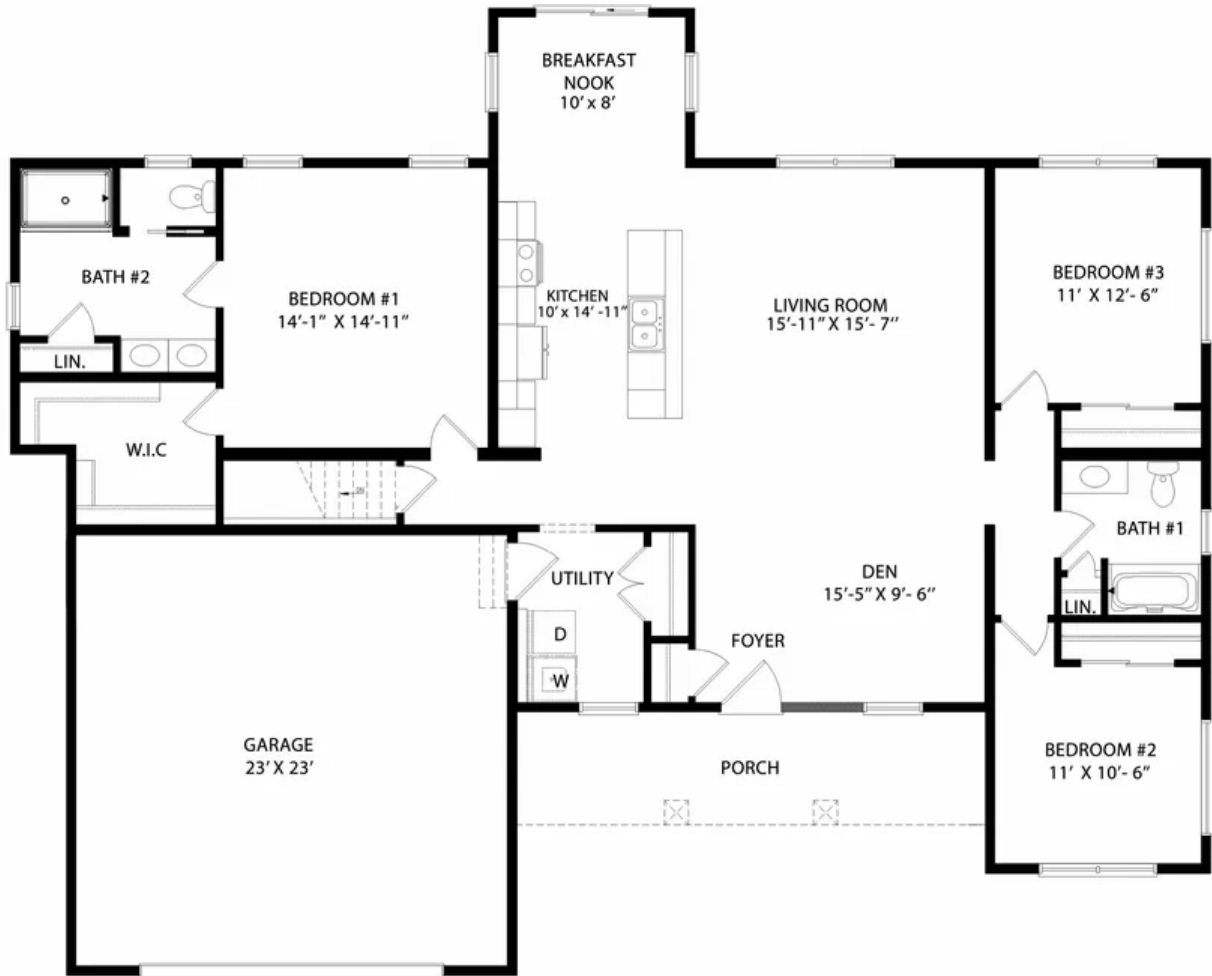
Bill Lake Modular Homes reserves the right to change prices, plans, elevations, specifications, square footage and availability without prior notice or obligation. Renderings are for representation only and may vary from actual home. All rights reserved Effective 03/09/2024.



**billlakehomes.com**



# FLOOR PLAN THE MADISON



Overall Dimensions: 43'6" x 64'

Bill Lake Modular Homes reserves the right to change prices, plans, elevations, specifications, square footage and availability without prior notice or obligation. Renderings are for representation only and may vary from actual home. All rights reserved Effective 03/09/2024.



[billlakehomes.com](https://billlakehomes.com)

# THE CYNTHIA



**3**  
BEDS

**2.5**  
BATHS

**1,958**  
SQ FT

## About the The Cynthia Design

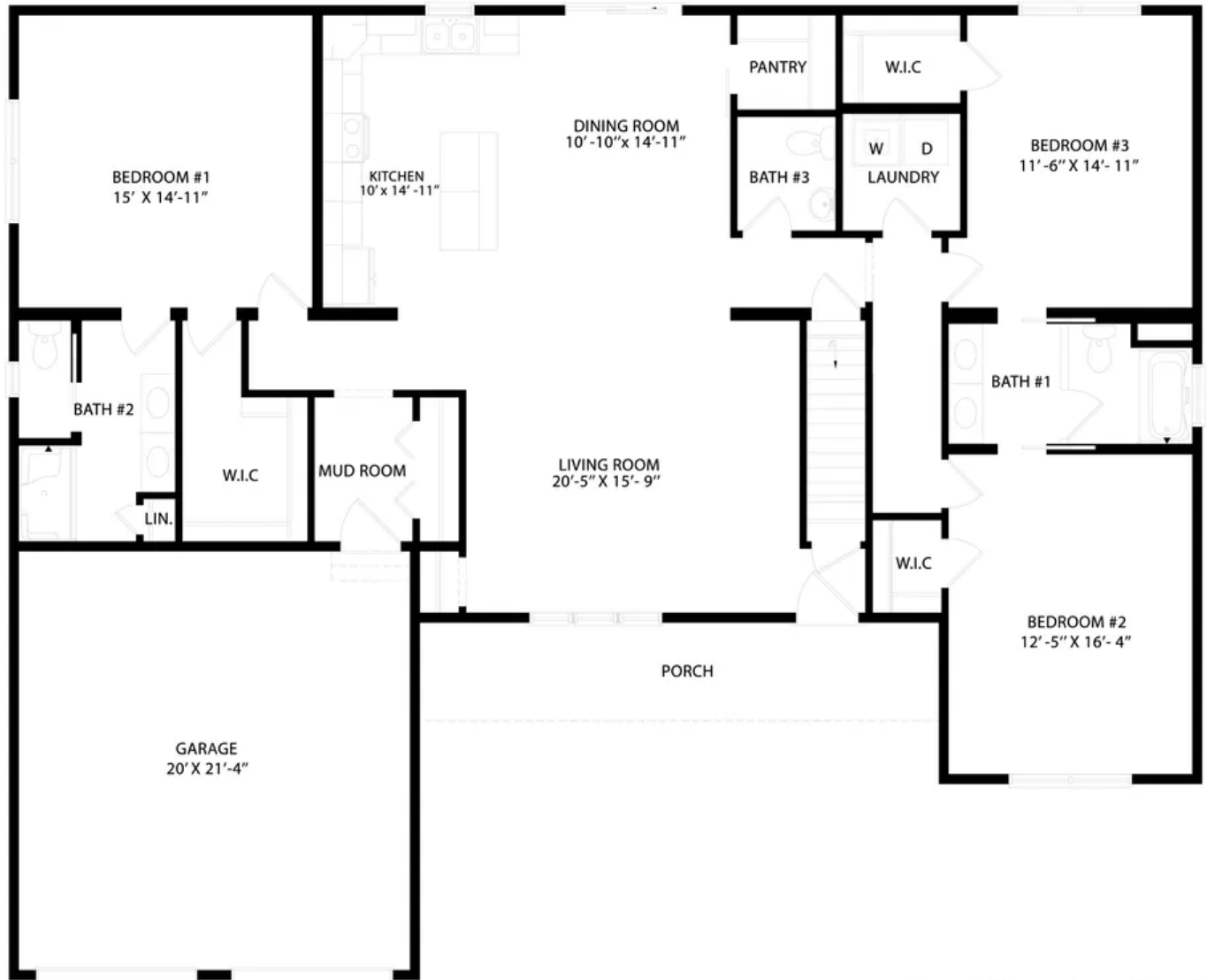
Introducing The Cynthia! This 3 Bed, 2.5 Bath, 1,958 sq. ft. floor plan boasts a modern and open layout, perfect for comfortable living and entertaining. With a split bedroom design, the primary suite offers privacy while the secondary bedrooms share a convenient Jack and Jill bathroom. A large pantry complements the spacious kitchen, providing ample storage for culinary essentials, completing this stylish and functional home. Overall Dimensions: 50'x61'

Bill Lake Modular Homes reserves the right to change prices, plans, elevations, specifications, square footage and availability without prior notice or obligation. Renderings are for representation only and may vary from actual home. All rights reserved Effective 03/09/2024.



[billlakehomes.com](https://billlakehomes.com)

# FLOOR PLAN THE CYNTHIA



Bill Lake Modular Homes reserves the right to change prices, plans, elevations, specifications, square footage and availability without prior notice or obligation. Renderings are for representation only and may vary from actual home. All rights reserved Effective 03/09/2024.



[billlakehomes.com](https://billlakehomes.com)