



EXPERIENCE SERIES

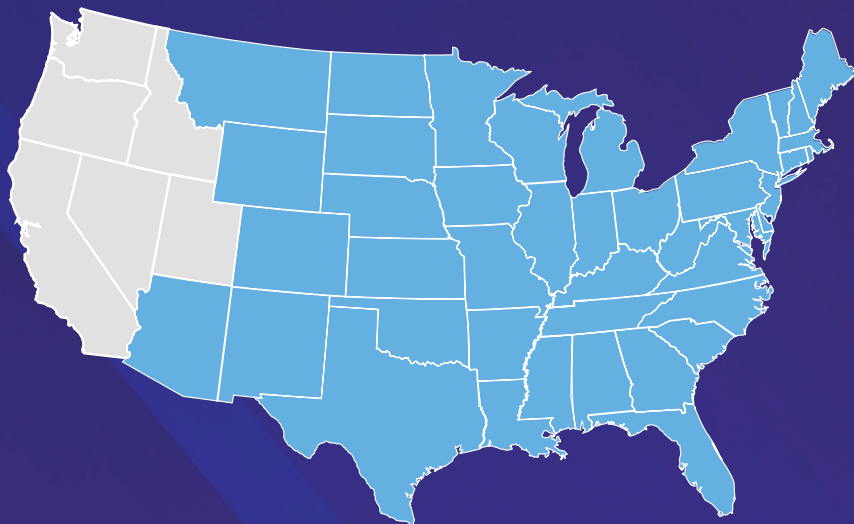
Clayton 
epic

EPIC EXPERIENCE

Made for Independent Retailers

A staple product that's anything but basic. It's Epic.

Features such as a stylish accent wall, practical and spacious kitchen configurations, and various design package selections make Epic appealing to the eyes and comfortable to live in. Factor in Clayton Built features and high construction standards such as OSB wrap, can lighting, and DuraCraft cabinets, and you have a series of homes that looks great, is built to last, and provides incredible value to home buyers.



ClaytonEpicExperience.com





EXPERIENCE SERIES

Tide

2 beds | 2 baths | 1,020 sq. ft. | 16x68

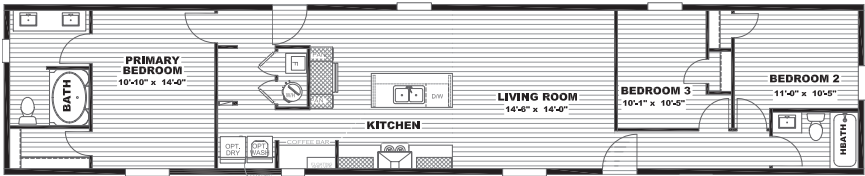




EXPERIENCE SERIES

Mariner

3 beds | 2 baths | 1,140 sq. ft. | 16x76

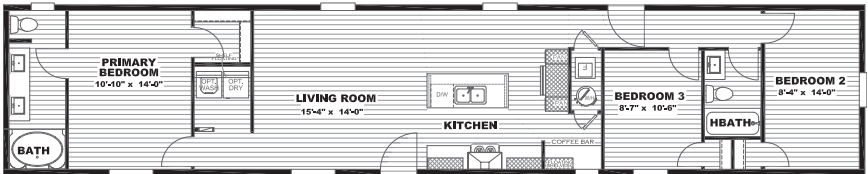




EXPERIENCE SERIES

Voyage

3 beds | 2 baths | 1,140 sq. ft. | 16x76

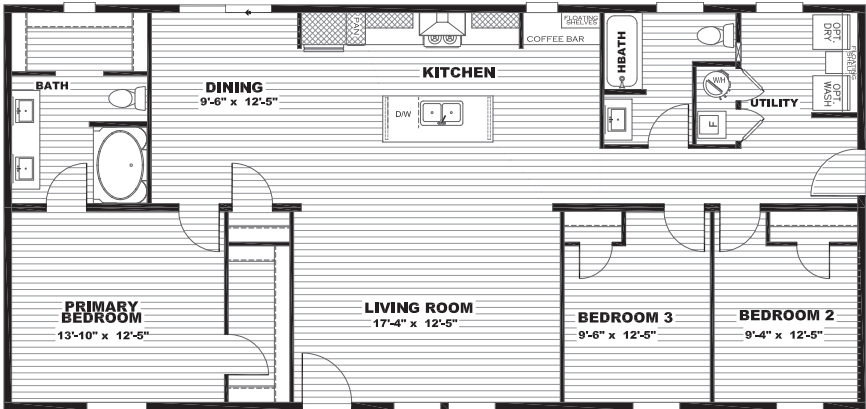




EXPERIENCE SERIES

Explorer

3 beds | 2 baths | 1,475 sq. ft. | 28x56

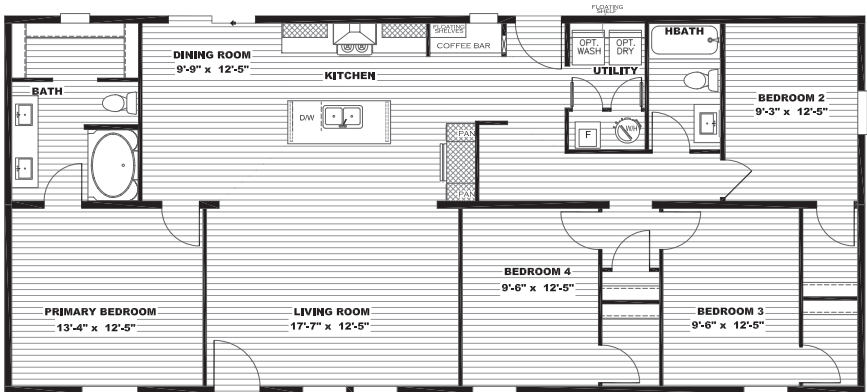




EXPERIENCE SERIES

Expedition

4 beds | 2 baths | 1,580 sq. ft. | 28x60

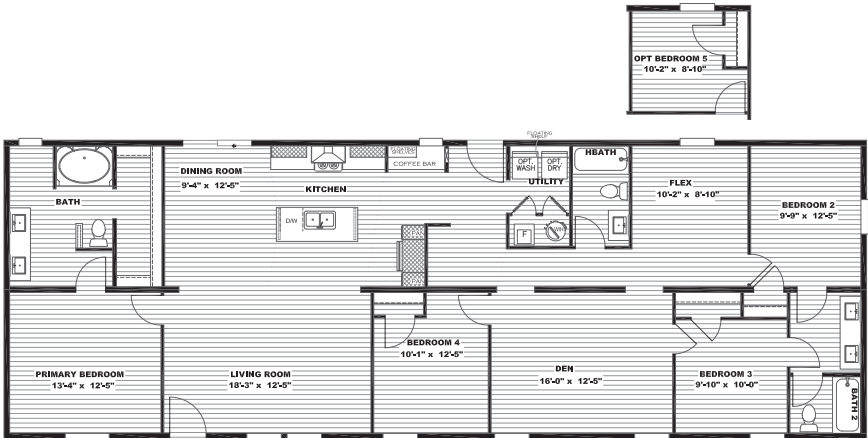




EXPERIENCE SERIES

Snowcap

4/5 beds | 3 baths | 2,001 sq. ft. | 28x76



EXPERIENCE SERIES FEATURES

EXTERIOR FEATURES

- OSB Wrap with House Wrap
- 8' Sidewalls with Flat Interior Ceilings
- Rip-Preventing Bottom Board
- Decorative Exterior Lantern Lights Front and Rear
- Standard Dormer on Multi-Sections
- Choice of (3) Exterior Designs*

FLOORS

- 16" On Center 2x6 Floor Joist
- Upgraded Lux Linoleum Throughout

WINDOWS AND DOORS

- 36x80 Cottage In-Swing Rear Door
- 36x80 Craftsman Style In-Swing Front Door
- Lux Low E Thermo-Pane Windows
- 30" Raised 2 Panel Interior Doors
- Full Double Metal Hinges on Interior Doors

ROOF/FRAME

- Solid Steel I Beam with Full Length Outriggers
- Fully Vented Soffit & Ridge Vents
- 6 Pattern Shingle Fastening

PLUMBING

- Rheem 40 Gallon Dual-Element Water Heater
- Pfister Metal Faucets Throughout
- Water Cut Offs at Plumbing Fixtures
- Whole House Water Cut Off
- Exterior Water Faucet on Rear
- Square Porcelain Sinks Throughout
- PEX Piping Throughout

**Upgrades available*

HVAC

- Energy Star Rated
- Ecobee Smart Thermostat
- Upgraded Insulation Package

INTERIOR FEATURES

- Led Can Lights Throughout
- Switched Lights in Walk-In Closets
- Framed Décor Wall in Living Area
- Duracraft Laundry Room Shelves
- Coffee Bar Area Standard
- Black Decorative Cabinet Pulls T/O
- 42" Duracraft Overhead Lined Cabinets
- Picture Frame Style Duracraft Cabinet Doors

KITCHEN

- Stainless Steel Appliances
- Dishwasher Standard
- Kitchen Island Standard
- Double Bowl 8" Deep Stainless-Steel Kitchen Sink
- Gooseneck Pfister Kitchen Faucet with Pull Out Sprayer
- Stainless Steel Designer Rangehood
- Drawer Bank on Each Side of Range
- Pot and Pan Drawers in Each Drawer Bank
- Fully Cabinet/Wall Encased Refrigerator Plumbed for Icemaker

BATHS

- Cab Stile Mirror Trim
- Double Lavs in Primary Baths
- Furniture Style Vanity
- Porcelain Over Steel Tub in Guest Bath
- 42x60 One Piece Fiberglass Garden Tub/Shower

The home series, floor plans, photos, renderings, specifications, features, pricing, materials and availability shown will vary by retailer and state, and are subject to change without notice.

Exterior Design Options



Basic Elevation with Clay Color Package



Colonial Elevation with Flint Color Package



Southern Ranch Elevation with White Color Package

Shown on the Mariner.



ADDISON, AL

18025 County Road 41, Addison, AL 35540

866.736.3252

EpicAddison@claytonhomes.com

FORT WORTH, TX

8701 Harmon Road, Ft. Worth, TX 76177

817.847.1355

EpicFortWorth@claytonhomes.com

LEWISTOWN, PA

30 Industrial Park Road, Lewistown, PA 17044

717.248.3947

EpicLewistown@claytonhomes.com

NASHVILLE, NC

1001 Eastern Avenue, Nashville, NC 27856

252.459.7026

EpicNashville@claytonhomes.com

WAKARUSA, IN

66700 State Road 19, Wakarusa, IN 46573

574.862.4461

EpicWakarusa@claytonhomes.com

WAYCROSS, GA

3350 Industrial Blvd, Waycross, GA 31503

912.283.6400

EpicWaycross@claytonhomes.com

ClaytonEpicExperience.com