



## JOURNEY SERIES

Clayton   
epic

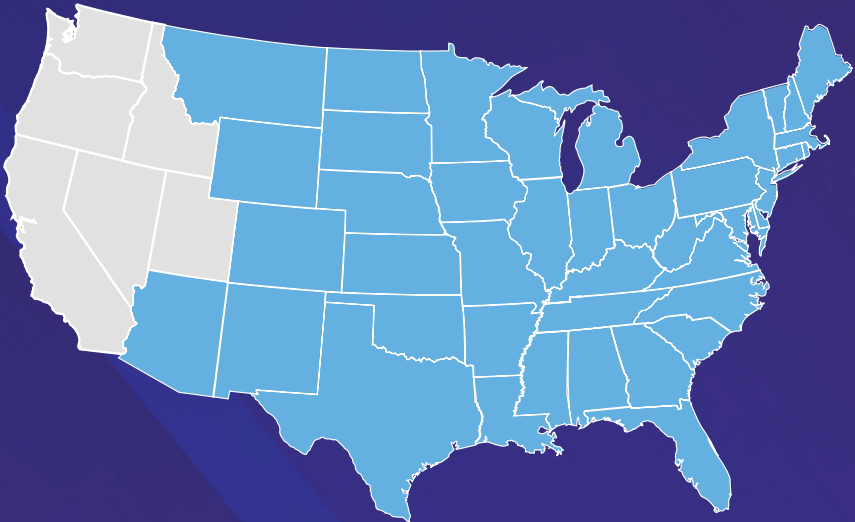
# EPIC JOURNEY

## Made For Communities

**A staple product that's anything but basic. It's Epic.**

**Features such as a stylish accent wall, practical and spacious kitchen configurations, and various design package selections make Epic appealing to the eyes and comfortable to live in. Factor in Clayton Built features and high construction standards such as OSB wrap, can lighting, and DuraCraft cabinets, you have a series of homes that looks great, is built to last, and provide incredible value for communities and their tenants.**

---



**[ClaytonEpicJourney.com](http://ClaytonEpicJourney.com)**







## JOURNEY SERIES

# Polo

2 beds | 1 baths | 737 sq. ft. | 14x56



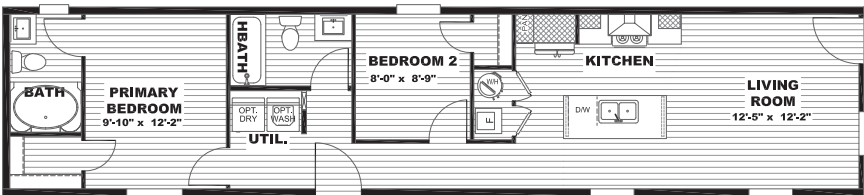




**JOURNEY SERIES**

# Cortes

2 beds | 2 baths | 790 sq. ft. | 14x60





**JOURNEY SERIES**

# Dias

3 beds | 2 baths | 869 sq. ft. | 14x66



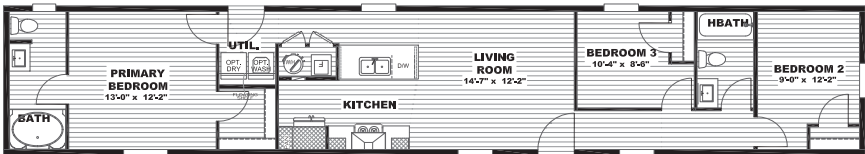
PLAN 1111-0000-01



**JOURNEY SERIES**

# Erikson

3 beds | 2 baths | 1,001 sq. ft. | 14x76



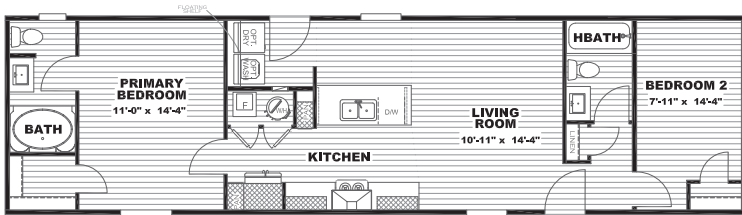




**JOURNEY SERIES**

# Lewis

2 beds | 2 baths | 840 sq. ft. | 16x56

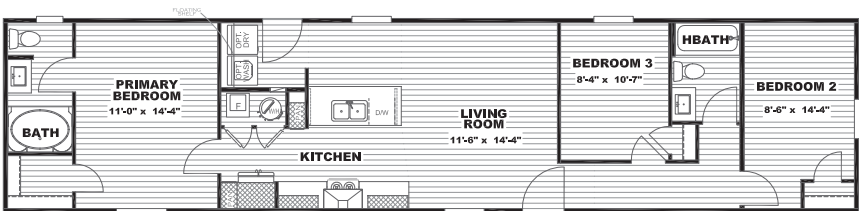




JOURNEY SERIES

# Clark

3 beds | 2 baths | 1,023 sq. ft. | 16x66





JOURNEY SERIES

# Magellan

3 beds | 2 baths | 1,140 sq. ft. | 16x72



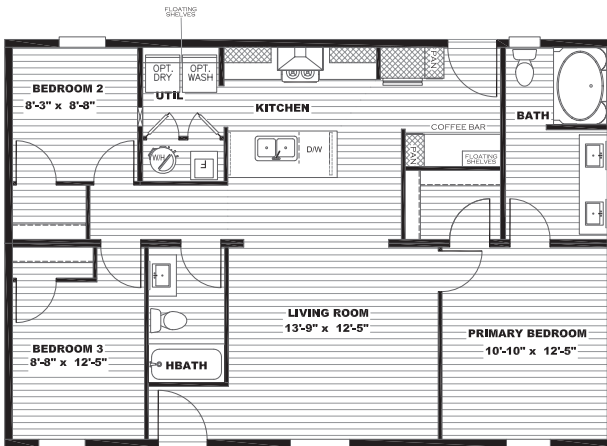




**JOURNEY SERIES**

# Drake

3 beds | 2 baths | 1,053 sq. ft. | 28x40

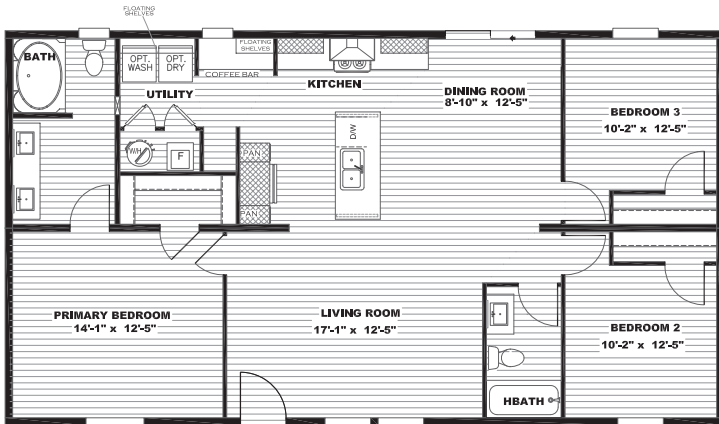




**JOURNEY SERIES**

# DeSoto

3 beds | 2 baths | 1,264 sq. ft. | 28x48





**JOURNEY SERIES**

# Cook

3 beds | 2 baths | 1,369 sq. ft. | 28x52



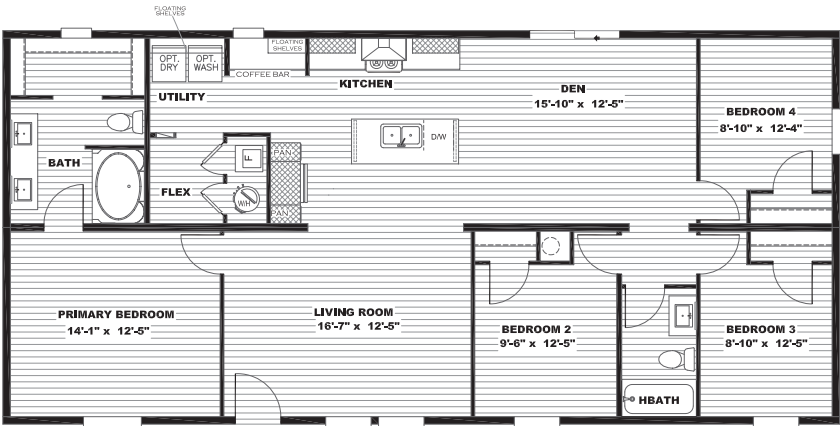




**JOURNEY SERIES**

# Boone

4 beds | 2 baths | 1,475 sq. ft. | 28x56



# JOURNEY SERIES FEATURES

## EXTERIOR FEATURES

- Full OSB Wrap with House Wrap
- 8' Sidewalls with Flat Interior Ceilings
- Rip-Preventing Bottom Board
- Decorative Exterior Lantern Lights Front and Rear
- Standard Dormer on Multi-Sections
- Choice of (3) Exterior Designs\*

## FLOORS

- 16" On Center 2x6 Floor Joist
- Upgraded Lux Linoleum Throughout

## WINDOWS AND DOORS

- 36x80 Cottage In-Swing Rear Door
- 36x80 Craftsman-Style In-Swing Front Door
- Lux® Low-E Thermo-Pane Windows
- 30" Raised Two-Panel Interior Doors
- Full Double Metal Hinges on Interior Doors

## ROOF/FRAME

- Solid Steel I Beam with Full Length Outriggers
- Fully Vented Soffit & Ridge Vents

## PLUMBING

- Rheem® 40 Gallon Dual-Element Water Heater
- Pfister® Metal Faucets Throughout
- Water Shut-Offs at Plumbing Fixtures
- Whole House Water Shut-Offs
- Exterior Water Faucet on Rear
- Porcelain Sinks Throughout
- PEX Piping Throughout

## HVAC

- ENERGY STAR® Rated
- ecobee® Smart Thermostat
- Upgraded Insulation Package

## INTERIOR FEATURES

- LED Can Lights Throughout
- Switched Lights in Walk-In Closets
- Framed Décor Wall in Living Area
- DuraCraft® Laundry Room Shelves
- Coffee Bar Area in Some Models
- Black Decorative Cabinet Pulls T/O
- 42" DuraCraft® Overhead Lined Cabinets
- Picture Frame Style DuraCraft® Cabinet Doors

## KITCHEN

- Frigidaire® Smooth-Top Range and Side-by-Side Refrigerator with Water/Ice in Door
- Dishwasher Standard
- Kitchen Island Standard
- Double Bowl 8" Deep Stainless-Steel Kitchen Sink
- Gooseneck Pfister® Kitchen Faucet with Pull Out Sprayer
- Stainless Steel Designer Rangehood
- Drawer Bank on Each Side of Range
- Pot and Pan Drawers in Each Drawer Bank
- Fully Cabinet/Wall Encased Refrigerator

## BATHS

- Cab Stile Mirror Trim
- Double Lavs in Primary Baths
- Furniture-Style Vanity
- Porcelain Over Steel Tub in Guest Bath
- 42"x60" One Piece Fiberglass Soaker Tub/Shower in Primary Baths

The home series, floor plans, photos, renderings, specifications, features, pricing, materials and availability shown will vary by retailer and state, and are subject to change without notice.

*\*Upgrades available*



## **ADDISON, AL**

18025 County Road 41, Addison, AL 35540

866.736.3252

EpicAddison@claytonhomes.com

## **FORT WORTH, TX**

8701 Harmon Road, Ft. Worth, TX 76177

817.847.1355

EpicFortWorth@claytonhomes.com

## **LEWISTOWN, PA**

30 Industrial Park Road, Lewistown, PA 17044

717.248.3947

EpicLewistown@claytonhomes.com

## **NASHVILLE, NC**

1001 Eastern Avenue, Nashville, NC 27856

252.459.7026

EpicNashville@claytonhomes.com

## **WAKARUSA, IN**

66700 State Road 19, Wakarusa, IN 46573

574.862.4461

EpicWakarusa@claytonhomes.com

## **WAYCROSS, GA**

3350 Industrial Blvd, Waycross, GA 31503

912.283.6400

EpicWaycross@claytonhomes.com

**ClaytonEpicJourney.com**