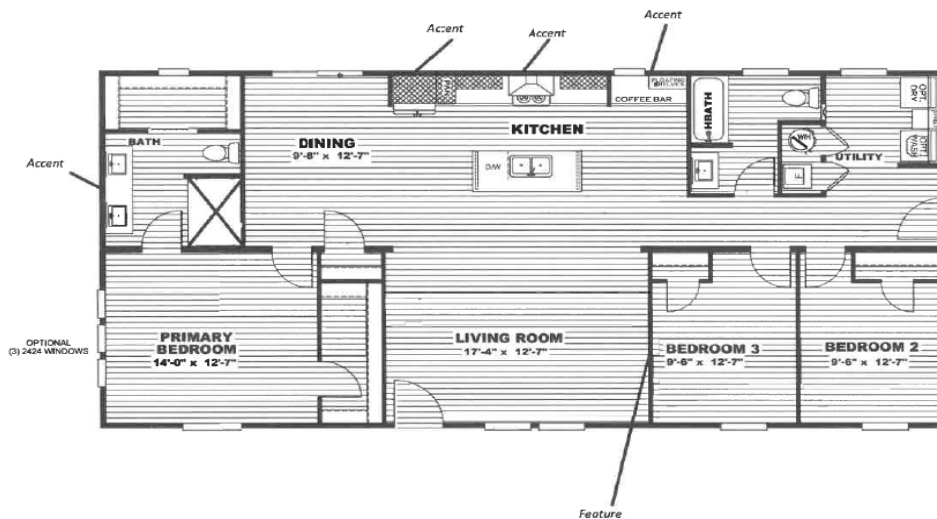




2651 ROUTE 9, MALTA, NY 12020
 P: (518) 580-1305 F: (518) 580-0919

“THE EXPLORER”



Options Displayed: 3 Bed | 2 Bath | 28 x 56 | 1,475 Sqft.

- | | | |
|---------------------------------|-----------------------------------|--|
| Tranquility Interior Package | Sliding Glass Door Dining Room | High Efficiency Carrier Gas Furnace |
| E-Built Energy Star Package | Living Room Accent Wall | Samsung Stainless Steel Appliances |
| White Vinyl Siding | LX311 Lino Flooring Throughout | Ecobee Smart Thermostat |
| Charcoal ARC 30yr Shingles | Black Cabinet Pulls | Recessed Led Lights Throughout |
| Black Raised Panel Shutters | Pfister Bathroom/Kitchen Fixtures | Laundry Room W/D Hookups |
| Stainless Steel Euro Range Hood | 60" Fiberglass Shower W/ Door | 40-GAL Rheem Dual-Element Water Heater |
| Front Craftsman Door | 60" Fiberglass Shower/ Tub | (1) Exterior Water Spigot Rear |
| Rear Door 36" 9-Lite | Picture Frame Mirrors | (2) Exterior Blk Carriage Lights |
| (3) 24" x 24" Windows BR1 | Furnace/ Water Heater Close-Off | (1) Exterior GFCI Rear Door |
| Window Over Coffee Bar | Zero Ready Insulation Package | 10-Year Warranty |
| Large Kitchen Island | R-27 Floors, R21 Walls, R38 Roof | |

* Price Includes: Delivery, Set, Interior & Exterior Trim Out, 2 Sets Of 4x4 Pressure Treated Steps, Regular Skirting, Heat Tape & Insulation on Water Line, Tie Downs, And Sewer Connection to Stub Out.

* Additional Costs: Insulated Skirting, Central Air, Sales Tax, Site Work, Land, & Furniture Not Included.

www.SHOHOMES.com