



Clayton
lewistown[®]

Tempo
Product Guide

Rising Sun

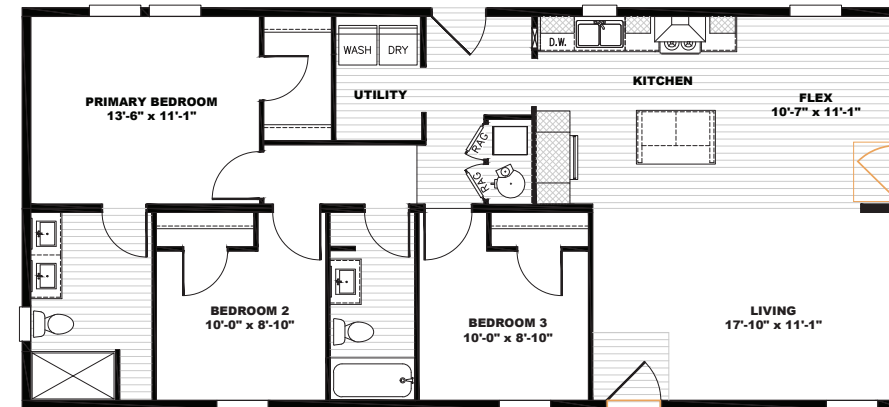
2 beds | 2 baths | 1,041 sq. ft. | 24x44



Alternate Door Location Available

Three Little Birds

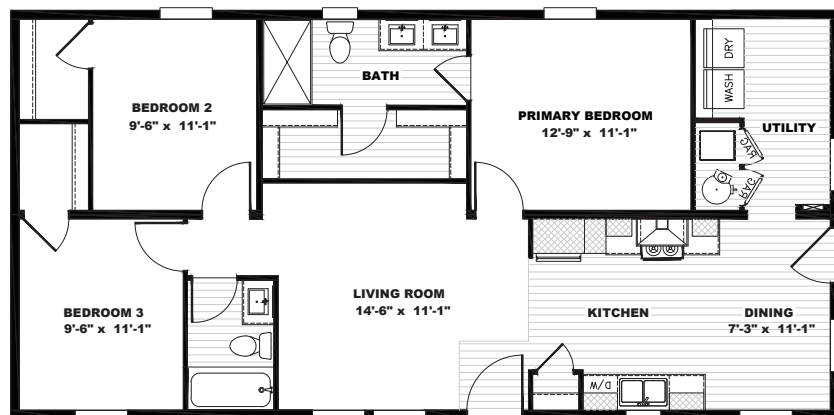
3 beds | 2 baths | 1,231 sq. ft. | 24x52



Alternate Front Door Location Available

Here Comes The Sun

3 beds | 2 baths | 1,136 sq. ft. | 24x48



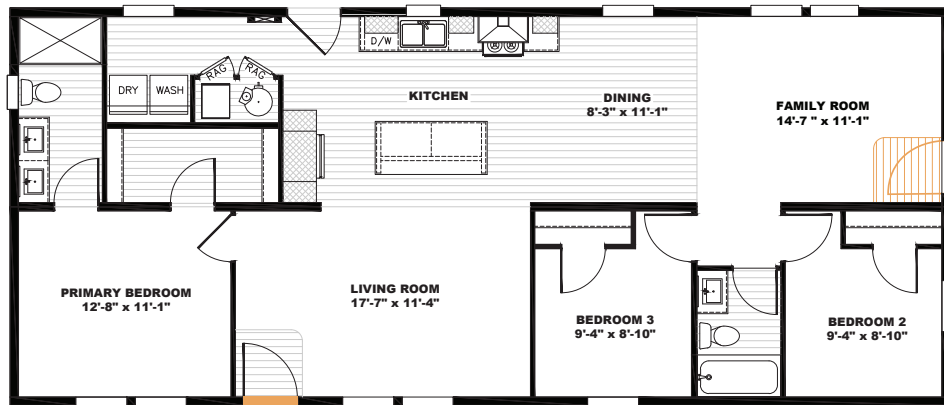
Stand By Me

3 beds | 2 baths | 1,231 sq. ft. | 24x52



My Girl

3 beds | 2 baths | 1,325 sq. ft. | 24x56



🎵 Alternate Front Door Location Available

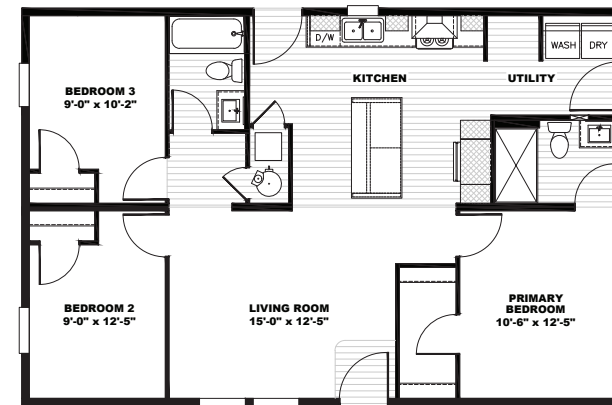
Whole Lotta Love

3 beds | 2 baths | 1,325 sq. ft. | 24x56



Sweet Dreams

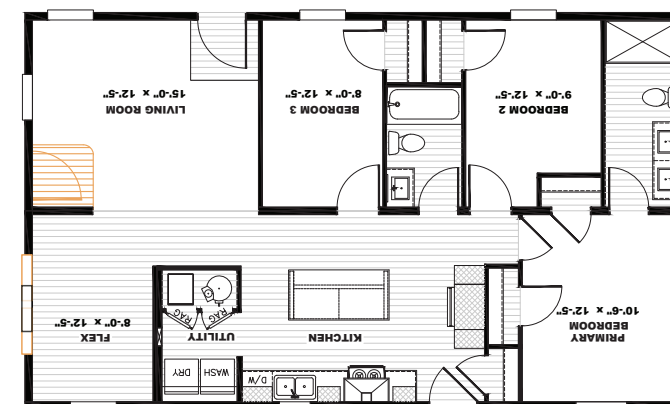
3 beds | 2 baths | 1,120 sq. ft. | 28x40



🎵 Alternate Window in place of Door

Beautiful Morning

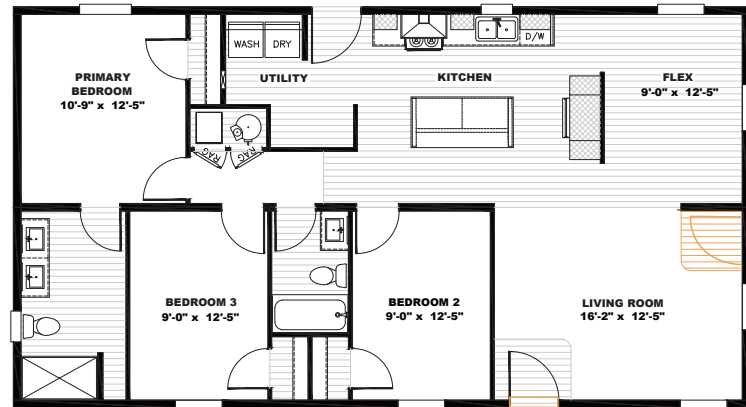
3 beds | 2 baths | 1,232 sq. ft. | 28x44



🎵 Alternate Front Door Location Available

Under Pressure

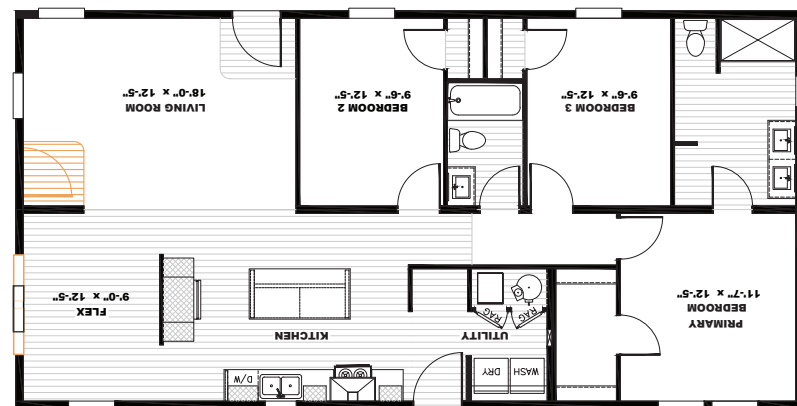
3 beds | 2 baths | 1,344 sq. ft. | 28x48



Alternate Front Door Location Available

Free Bird

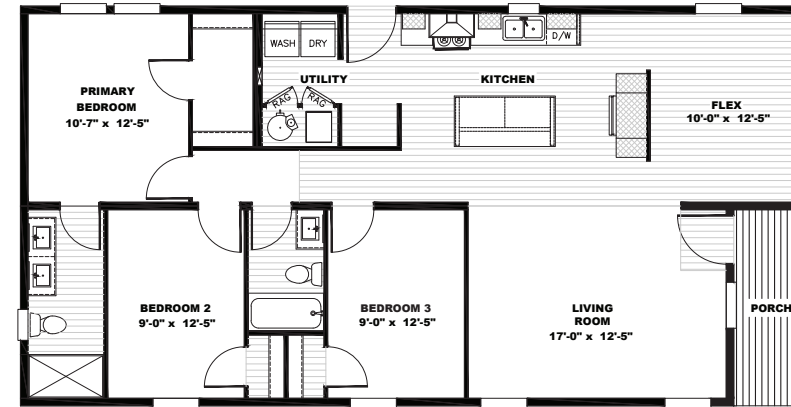
3 beds | 2 baths | 1,369 sq. ft. | 28x52



Alternate Front Door Location Available

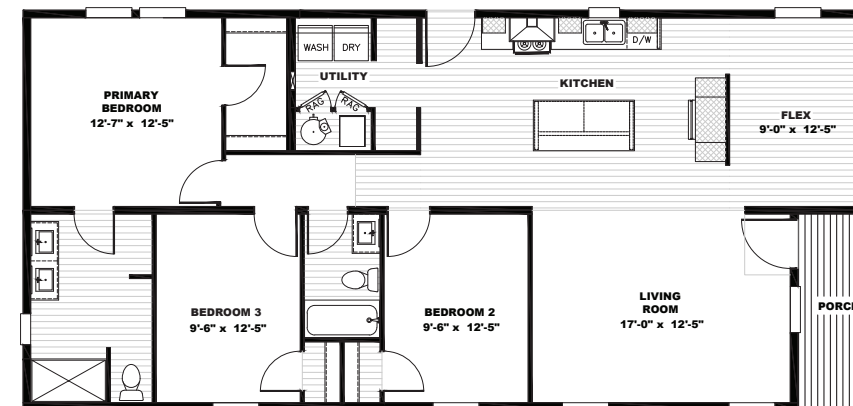
Johnny B Goode

3 beds | 2 baths | 1,456 sq. ft. | 28x52



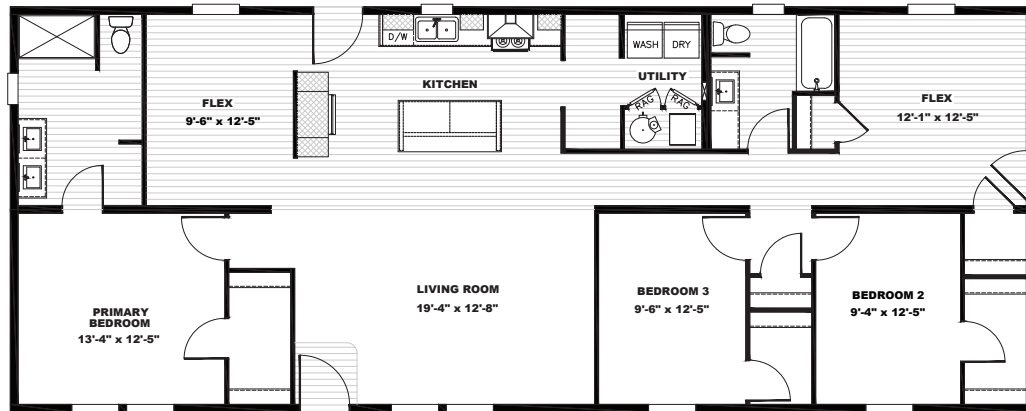
Stayin' Alive

3 beds | 2 baths | 1,475 sq. ft. | 28x56



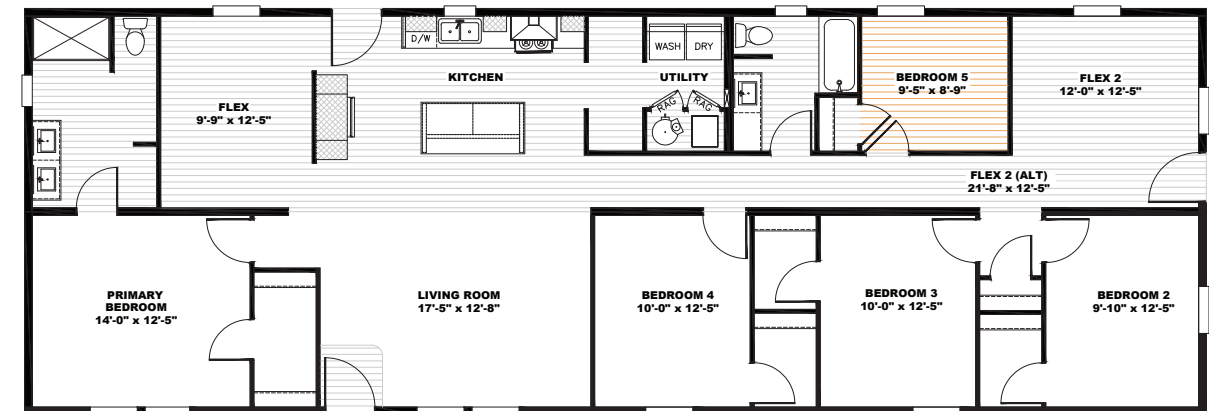
Rocket Man

3 beds / 2 baths / 1,738 sq. ft. | 28x66



Superfly

5 beds / 2 baths / 2,001 sq. ft. | 28x76



🎵 Alternate Layout: 4 Bedroom with Large Flex Space

Hey Jude

5 beds / 2 baths / 1,848 sq. ft. | 28x72



🎵 Alternate Layout: 4 Bedroom with Large Flex Space



DuraCraft® Cabinet



Bishop Oak Craftsman Profile
Primary Kitchen and Bathroom Cabinets

Plover Craftsman Profile
Kitchen Island Cabinets

DuraCraft® Cabinet Studio Beige Package



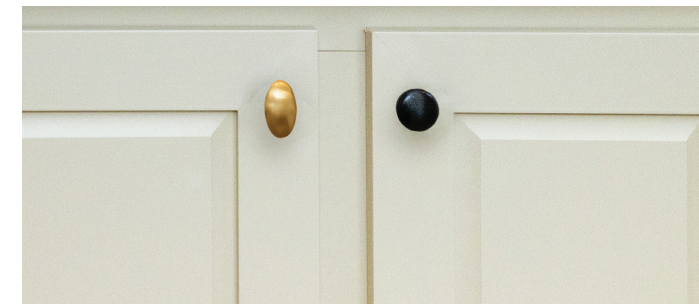
Studio Beige Craftsman Profile
Primary Kitchen and Bathroom Cabinets

Onyx Craftsman Profile
Kitchen Island Cabinets

Cabinet Knobs



Left: Brushed Brass Egg Knob
Right: Matte Black Round Knob



Left: Brushed Brass Egg Knob
Right: Matte Black Round Knob

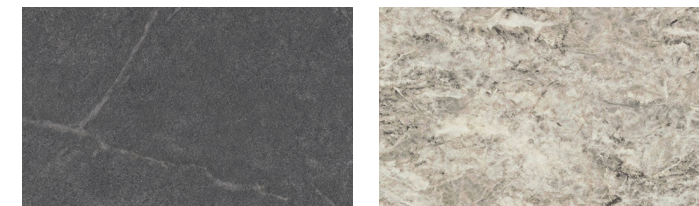
Carpet & Linoleum Flooring



Shaw® New Wave Weathered

LUX Natural Oak #311

Laminate Countertops



Ferro Grafite

Silver Quartzite



Clay
Mist Board and Batten Between Columns



Flint
Grey Board and Batten Between Columns



White
Grey Board and Batten Between Columns



Bayou Blue
White Board and Batten Between Columns

UPGRADE

Tempo

Clayton[®]
lewistown

Clayton Built

The home series, floor plans, photos, renderings, specifications, features, pricing, materials and availability shown will vary by retailer and state, and are subject to change without notice.